

# TULELAKE SUBBASIN GROUNDWATER CORE TEAM

## CORE TEAM MEMBERS

Gary Wright, Tulelake Irrigation District  
Kraig Beasly, Tulelake Irrigation District  
Henry Ebinger, City of Tulelake  
Matt Parker, Siskiyou County  
Tiffany Martinez, Modoc County



Kraig Beasly  
Chairperson

Tiffany Martinez  
Clerk of the Core Team

2717 Havlina Road  
Tulelake, CA 96134  
(530) 667-2249

## SPECIAL MEETING AGENDA FOR WEDNESDAY, MARCH 19, 2025

1:00 PM

### Alternate Meeting Locations:

204 South Court Street, Alturas, CA 96101  
1312 Fairlane Road, Suite 1, Yreka, CA 96097

The Sustainable Groundwater Management Act (SGMA) established a new structure for managing California's groundwater resources at a local level by local agencies. SGMA requires, by June 30, 2017, the formation of locally controlled groundwater sustainability agencies (GSAs) in the State's high- and medium-priority groundwater basins and subbasins (basins). A GSA is responsible for developing and implementing a groundwater sustainability plan (GSP) to meet the sustainability goal of the basin to ensure that it is operated within its sustainable yield, without causing undesirable results.

### 1:00 PM Call to Order

### Pledge of Allegiance

**Public Comment** - *This is the time set aside for citizens to address the Core Team on matters on the consent agenda and matters not otherwise on the agenda. Comments should be limited to matters within the jurisdiction of the Core Team. If your comment concerns an item shown on the agenda please address the Core Team after that item is open for public comment. By law, the Core Team cannot take action on matters that are not on the agenda. The chair reserves the right to limit the duration of each speaker to three minutes. Speaker may not cede their time.*

*Agenda items with times listed will be considered at that time all other items will be considered as listed on the agenda or as deemed necessary by the Chair.*

### Approval or Additions/Deletions to Agenda

### Correspondence

### Consideration / Action

1. CONSIDERATION/ACTION: Requesting approval of the Tulelake Subbasin Groundwater Core Team meeting minutes as follows (Tulelake Core Team):
  - a. December 19, 2024
2. CONSIDER/ACTION: Draft Groundwater Sustainability Plan (GSP) Annual Report for Water Year 2024 (Tulelake Core Team).
3. CONSIDERATION/ACTION: DWR Approval of GSP and Next Steps (Tulelake Core Team).

## **Core Team Members Reports**

1. Siskiyou County
2. City of Tulelake
3. Modoc County
4. Tulelake Irrigation District

## **Other Reports**

1. California Department of Water Resources

## **Adjournment**

Next Tulelake Subbasin Core Team Meeting will be June 18, 2025, at 1:00pm

Parties with a disability as provided by the American Disabilities Act who require special accommodations or aides in order to participate in the public meeting should make the request to the Clerk at [clerkoftheboard@co.modoc.ca.us](mailto:clerkoftheboard@co.modoc.ca.us) at least 48 hours prior to the meeting.

POSTED AT CITY HALL, TULELAKE IRRIGATION DISTRICT, ONLINE, AND AT TULELAKE POST OFFICE ON MARCH 14, 2025.

## TULELAKE SUBBASIN GROUNDWATER CORE TEAM

### CORE TEAM MEMBERS

Gary Wright, Tulelake Irrigation District  
Kraig Beasly, Tulelake Irrigation District  
Henry Ebinger, City of Tulelake  
Matt Parker, Siskiyou County  
Tiffany Martinez, Modoc County



Kraig Beasly  
Chairperson

Tiffany Martinez  
Clerk of the Core Team

2717 Havlina Road  
Tulelake, CA 96134  
(530) 667-2249

### MEETING MINUTES, WEDNESDAY, DECEMBER 19, 2024

Name	Title	Status	Arrived
Matt Parker	Siskiyou County Core Team Member	Present	1:00 PM
Gary Wright	Tulelake Irrigation District Core Team Member	Absent	1:00 PM
Kraig Beasly	Tulelake Irrigation District Core Team Member	Present	1:00 PM
Henry Ebinger	City of Tulelake Core Team Member	Present	1:00 PM
Tiffany Martinez	Modoc County Core Team Member	Remote	1:00 PM
<b>Advisory Members to the Tulelake Core Team</b>			
David King	Agricultural Groundwater/Surface Water User	Absent	1:00 PM
Mike Byrne	Environmental Conservation Water User	Absent	1:00 PM
Ken Masten	Oregon Groundwater/Surface Water User	Absent	1:00 PM
Matt Huffman	Residential Domestic Water User	Absent	1:00 PM

#### **1:02 PM Call to Order**

Public Present: Kyle Knutson, MBK Engineering and Gene Lewis, DWR, and Brad Kirby, Tulelake Irrigation District

#### **Public Comment**

None.

#### **Approval or Additions/Deletions to Agenda**

**Ordered on a motion by Committee Member Parker, seconded by Committee Member Ebinger to approve the agenda as presented.**

**Motion carried unanimously.**

#### **Correspondence**

Committee Member Beasly reported he received a call from Shane Edmunds at DWR who stated the revised Groundwater Sustainability Plan (GSP) determination would not occur until early 2025. Committee Member Parker reported he received similar correspondence from DWR.

#### **Consideration/Action**

- 1. CONSIDERATION/ACTION: Requesting approval of the Tulelake Subbasin Groundwater Core Team meeting minutes as follows: 1) February 8, 2024; 2) March 20, 2024; 3) June 19, 2024. (Tulelake Core Team)**

**Ordered on a motion by Committee Member Ebinger, seconded by Committee Member Parker to approve of the Tulelake Subbasin Groundwater Core Team meeting minutes as follows: 1) February 8, 2024; 2) March 20, 2024; 3) June 19, 2024.**

**Motion carried unanimously.**

- 2. CONSIDERATION/ACTION: Next meeting and schedule of meetings. (Tulelake Core Team)**

Committee Member Beasley reported there was a request from the Oregon Department of Water Resources to have a remote link for the meetings.

After a lengthy discussion, the consensus of the committee was to not provide a public Zoom link due to the challenges the committee has had with limited bandwidth and inadequate audio.

A discussion was held on the meeting dates and the following dates were selected for 2025: 1) March 19, 2025; 2) June 18, 2025; 3) September 17, 2025; 4) December 17, 2025.

**Ordered on a motion by Committee Member Parker, seconded by Committee Member Ebinger to approve the 2025 Tulelake Core Team meeting schedule.**

**Motion carried unanimously.**

#### **Core Team Member Comments**

Committee Member Parker: 1) Butte Valley Basin is also waiting on a determination from DWR.

Committee Member Ebinger reported on the following: 1) City of Tulelake is contracting with the California Rural Water Association to create a report on groundwater quality.

Committee Member Martinez reported on the following: 1) Big Valley Basin is also waiting on a determination from DWR.

A discussion was held on the process of identifying inactive or abandoned wells within groundwater basins. It was suggested to DWR staff to consider adding categories to the domestic well categorization to include inactive and landscaping. Committee Member Beasley



reported there are many homsteads in the basin that had a domestic well but no longer have a home on the porpoerty or the well is now being used for landscaping. DWR staff reported they would share the information with their agency.

Committee Member Beasy reported on the following: None.

**ADJOURNMENT**

**Ordered on a motion by Committee Member Ebinger, seconded by Committee Member Parker to adjourn the meeting.**

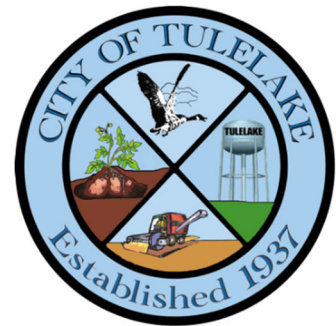
**Motion carried unanimously.**

DRAFT

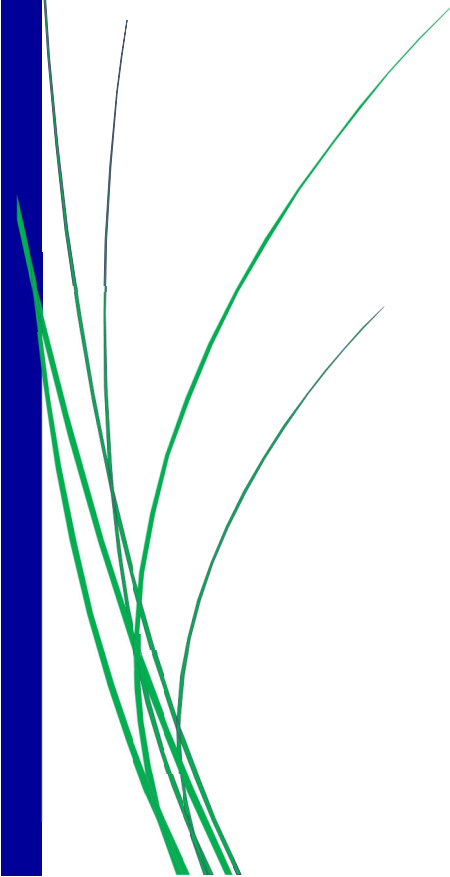
# Tule Lake Subbasin

Groundwater Sustainability Plan

Annual Report Water Year 2024



**MBK ENGINEERS**  
455 UNIVERSITY AVE. SUITE 100  
SACRAMENTO, CA 95825



## Table of Contents

<b>EXECUTIVE SUMMARY .....</b>	<b>1</b>
<b>1 INTRODUCTION .....</b>	<b>1</b>
<b>2 BASIN CONDITIONS .....</b>	<b>1</b>
GROUNDWATER CONDITIONS.....	1
WATER QUALITY .....	5
CHANGE IN GROUNDWATER STORAGE.....	5
GROUNDWATER EXTRACTIONS .....	9
SURFACE WATER SUPPLY.....	10
TOTAL WATER USE.....	11
<b>3 GSP IMPLEMENTATION PROGRESS .....</b>	<b>1</b>
IMPLEMENTATION OF PROJECTS AND MANAGEMENT ACTIONS .....	1

## TABLE OF FIGURES

FIGURE 1-1. LOCATION OF THE GROUNDWATER SUSTAINABILITY AGENCIES WITHIN THE TULE LAKE SUBBASIN .....	2
FIGURE 2-1. SPRING 2023 GROUNDWATER SURFACE ELEVATIONS.....	3
FIGURE 2-2. FALL 2023 GROUNDWATER SURFACE ELEVATIONS .....	4
FIGURE 2-3 CHANGE IN SPRING GROUNDWATER ELEVATIONS FROM 2022 TO 2023 .....	6
FIGURE 2-4. ESTIMATED GROUNDWATER PUMPING AND CHANGE IN STORAGE.....	8

## TABLE OF TABLES

TABLE 2-1. SUMMARY OF SUSTAINABLE MANAGEMENT CRITERIA AND MOST RECENT GROUNDWATER LEVEL MEASUREMENT AT REPRESENTATIVE MONITORING WELLS.....	1
TABLE 2-2. WATER QUALITY QUANTITATIVE SUSTAINABLE MANAGEMENT CRITERIA.....	5
TABLE 2-3. CHANGE IN GROUNDWATER STORAGE (TAF).....	7
TABLE 2-4. GROUNDWATER EXTRACTIONS (TAF) .....	9
TABLE 2-5. SURFACE WATER SUPPLY (TAF) .....	10
TABLE 2-6. TOTAL WATER USE (TAF) .....	11
TABLE 3-1. SUMMARY OF PROJECTS AND MANAGEMENT ACTIONS .....	3

## **APPENDICES**

- A. ELEMENTS GUIDE CHECKLIST
- B. GROUNDWATER MONITORING WELL HYDROGRAPHS
- C. GROUNDWATER EXTRACTIONS AND METHODS
- D. SURFACE WATER SUPPLY
- E. TOTAL WATER USE

## List of Acronyms and Abbreviations

AEM	Airborne Electromagnetic	MT	Minimum Threshold
AF	Acre-Feet	Reclamation	U.S. Bureau of Reclamation
BGS	Below Ground Surface	SGMA	Sustainable Groundwater Management Act
DWR	California Department of Water Resources	TAF	Thousand Acre-Feet
FT	Feet	TID	Tulelake Irrigation District
GDE	Groundwater Dependent Ecosystems	TSS	Technical Support Services
GSA	Groundwater Sustainability Agency	UKL	Upper Klamath Lake
GSP or Plan	Groundwater Sustainability Plan	VD	Very Dry
IM	Interim Milestone	WQ	Water Quality
MO	Measurable Objective	WY	Water Year

## Executive Summary

### Introduction

The Tule Lake Subbasin (Subbasin) Groundwater Sustainability Plan (GSP or Plan) was adopted on December 14, 2020, by the four Groundwater Sustainability Agencies (GSAs): the City of Tulelake GSA, Modoc County GSA, Siskiyou County GSA, and the Tulelake Irrigation District GSA. The GSAs were formed in accordance with the Sustainable Groundwater Management Act (SGMA) to prepare and implement the GSP for the Subbasin. The GSP was submitted to the California Department of Water Resources (DWR) on January 31, 2022, consistent with the January 31, 2022, deadline for submission of GSPs by medium priority basins. On January 18, 2024, DWR transmitted a letter (DWR Letter) to the GSAs which stated that the GSP was found to be “incomplete” and identified two corrective actions relative to minimum thresholds (MTs) established in the GSP. At the direction of the GSAs, MBK Engineers and Tulelake Irrigation District GSA staff met with DWR staff four times to discuss the DWR Letter and the GSAs’ plan to address the corrective actions. Following these discussions and after the corrective actions had been addressed, the GSAs resubmitted the revised GSP on July 16, 2024. On February 27, 2025, the GSAs received a determination letter from DWR identifying that the revised GSP had been approved. Included with the determination letter were nine recommended corrective actions and other suggested improvements. By January 31, 2027, the GSAs will prepare and submit to DWR a Periodic Evaluation and Amended GSP for the Subbasin which will address these items.

SGMA Regulation § 356.2(c) requires GSAs to submit an Annual Report to DWR by April 1 of each year following the submission of the GSP. This Annual Report provides Subbasin information for water year (WY) 2024. This Annual Report was prepared and submitted to DWR under the guidance of the GSAs and Plan Manager and is consistent with DWR’s Annual Report Elements Guide.

The WY type<sup>1</sup> for the year addressed in this Annual Report was very dry (VD) in 2024. The drought conditions and lack of project supply has resulted in a continued increase of coordination in the Klamath Basin and the Tulelake Subbasin between TID, the Klamath Water User’s Association, other Klamath Project water districts, Reclamation, the Klamath Project Drought Response Agency, and other local agencies.

### Basin Conditions

Conditions in the Subbasin over the last year improved from the recent drought conditions experienced during WY 2020 through WY 2022; however, they continued to result in reduced surface water supply from the Klamath Project. The lack of surface water has impacted groundwater conditions.

#### Groundwater Levels and Storage

This Annual Report identifies the minimum threshold (MT), measurable objective (MO), interim milestone (IM), and most recent fall measurement for each representative groundwater monitoring well in the Tule Lake Subbasin. The MT at one of the representative monitoring wells (TL-T3 GP) was

---

<sup>1</sup> WY types provide an indication of hydrology and are described in the technical memorandum provided in Appendix F of the Tulelake Subbasin GSP.

exceeded during WY 2023. This exceedance was likely a result from operational decisions outside of the GSAs control which led to drying up the Tule Lake Sumps. However, due to the slightly improved hydrologic conditions and operational decisions that led to refilling of the Tule Lake Sumps, groundwater levels within the Subbasin generally improved during the end of WY 2023 and WY 2024 as compared to WY 2022. Groundwater levels measured at TL-T3 GP have steadily increased since July 2023 and have been above the MT since September 2023. Due to the improved overall water supply conditions and improved groundwater levels at TL-T3 GP, the GSAs did not take additional action.

Change in groundwater storage was estimated using ArcGIS desktop software and Subbasin characteristics. Change in groundwater storage presented in this Annual Report is based on an evaluation of spring groundwater levels. It is estimated that groundwater storage in the Subbasin increased by about 20,200 acre-feet (AF) when comparing spring 2024 to spring 2023.

### **Water Quality**

The GSAs established a minimum threshold of 900 milligrams per liter (mg/L) of Total Dissolved Solids and a minimum threshold of 9 mg/L of Nitrate at all representative monitoring sites for the water quality sustainability indicator within the Subbasin. The MTs were not exceeded during WY 2024.

### **Water Use by Sector**

SGMA Regulations require that the Annual Report include groundwater extraction, water supply, and total water use information for each water use sector. This Annual Report provides a summary of this information within the Subbasin during WY 2024. The primary water use sectors in the Subbasin are urban and agriculture. The total annual water use within the subbasin was approximately 162,000 acre-feet (AF).

## **GSP Implementation Progress**

The GSP identified that the Tule Lake Subbasin is currently being sustainably managed. Therefore, no projects or management actions are required to achieve sustainability; however, the Tule Lake Subbasin GSAs have identified projects and management actions that can improve their understanding of the groundwater Subbasin. Due to the standing of the Subbasin, the projects and management actions identified in the GSP are intended to help reduce or eliminate data gaps and will be implemented based on the availability of resources and funding. Similarly, interim milestones are intended to be set to guide conditions during implementation of the GSP in order to define a pathway to reach sustainability within 20 years.

### **Implementation of Projects and Management Actions**

Projects and management actions identified in the GSP include development of a well inventory, construction of dedicated groundwater monitoring wells, expansion of the water quality monitoring network to include additional wells, potential groundwater dependent ecosystems field investigations, groundwater recharge, domestic well assistance program, and an adaptive management strategy. This Annual Report provides a project and management action update summary.

# 1 Introduction

The Tule Lake Subbasin (Subbasin) Groundwater Sustainability Plan (GSP or Plan) was adopted on December 14, 2020, by the four Groundwater Sustainability Agencies (GSAs). The four GSAs are the City of Tulelake GSA, Modoc County GSA, Siskiyou County GSA, and the Tulelake Irrigation District GSA, which were formed in accordance with the Sustainable Groundwater Management Act (SGMA) to prepare and implement the GSP for the Subbasin. Collectively, these four GSAs will be referred to as “GSAs”. The GSP was submitted to the California Department of Water Resources (DWR) on January 31, 2022, consistent with the January 31, 2022, deadline for submission of GSPs by medium priority basins. On January 18, 2024, DWR transmitted a letter (DWR Letter) to the GSAs which stated that the GSP was found to be “incomplete” and identified two corrective actions relative to minimum thresholds (MTs) established in the GSP. At the direction of the GSAs, MBK Engineers and Tulelake Irrigation District GSA staff met with DWR staff four times to discuss the DWR Letter and the GSAs’ plan to address the corrective actions. Following these discussions and after the corrective actions had been addressed, the GSAs resubmitted the revised GSP on July 16, 2024. On February 27, 2025, the GSAs received a determination letter from DWR identifying that the revised GSP had been approved. Included with the determination letter were nine recommended corrective actions and other suggested improvements. By January 31, 2027, the GSAs will prepare and submit to DWR a Periodic Evaluation and Amended GSP for the Subbasin which will address these items. Figure 1-1 shows the location of the Tulelake Subbasin and the GSAs.

SGMA Regulation § 356.2(c) requires GSAs to submit an Annual Report to DWR by April 1 of each year following the submission of the GSP. This Annual Report provides Subbasin information for WY 2024. The SGMA Regulation requires the Annual Report to cover groundwater elevations and change in groundwater storage, groundwater extractions, surface water supply, and a description of GSP implementation progress. This Annual Report was prepared and submitted to DWR under the guidance of the GSAs and Plan Manager and is consistent with DWR’s Annual Report Elements Guide. A completed elements guide checklist is provided as Appendix A.

The WY type<sup>2</sup> for 2023 was very dry (VD). As per the 2015 Klamath Project Operations Plan by the United States Bureau of Reclamation (Reclamation), the project water demand from Upper Klamath Lake (UKL) for a full supply is 390,000 acre-feet (AF) during the irrigation season. During the 2024 irrigation season, the Project Supply allocation (which is the surface water supply to irrigation districts including the Tulelake Irrigation District (TID)), for the Klamath Project was 260,000 AF. From 2011 through 2018 the Project Supply ranged from 239,000 AF to 390,000 AF, with an average of approximately 314,000 AF. The recent drought conditions (WY 2020 through WY 2022) and lack of project supply in conjunction with changes in regulations and operations has resulted in increased coordination within the Klamath Basin and the Tulelake Subbasin between TID, the Klamath Water User’s Association, other Klamath Project water districts, Reclamation, the Klamath Project Drought Response Agency, and other local agencies.

---

<sup>2</sup> WY types provide an indication of hydrology and are described in the technical memorandum provided in Appendix F of the Tulelake Subbasin GSP.



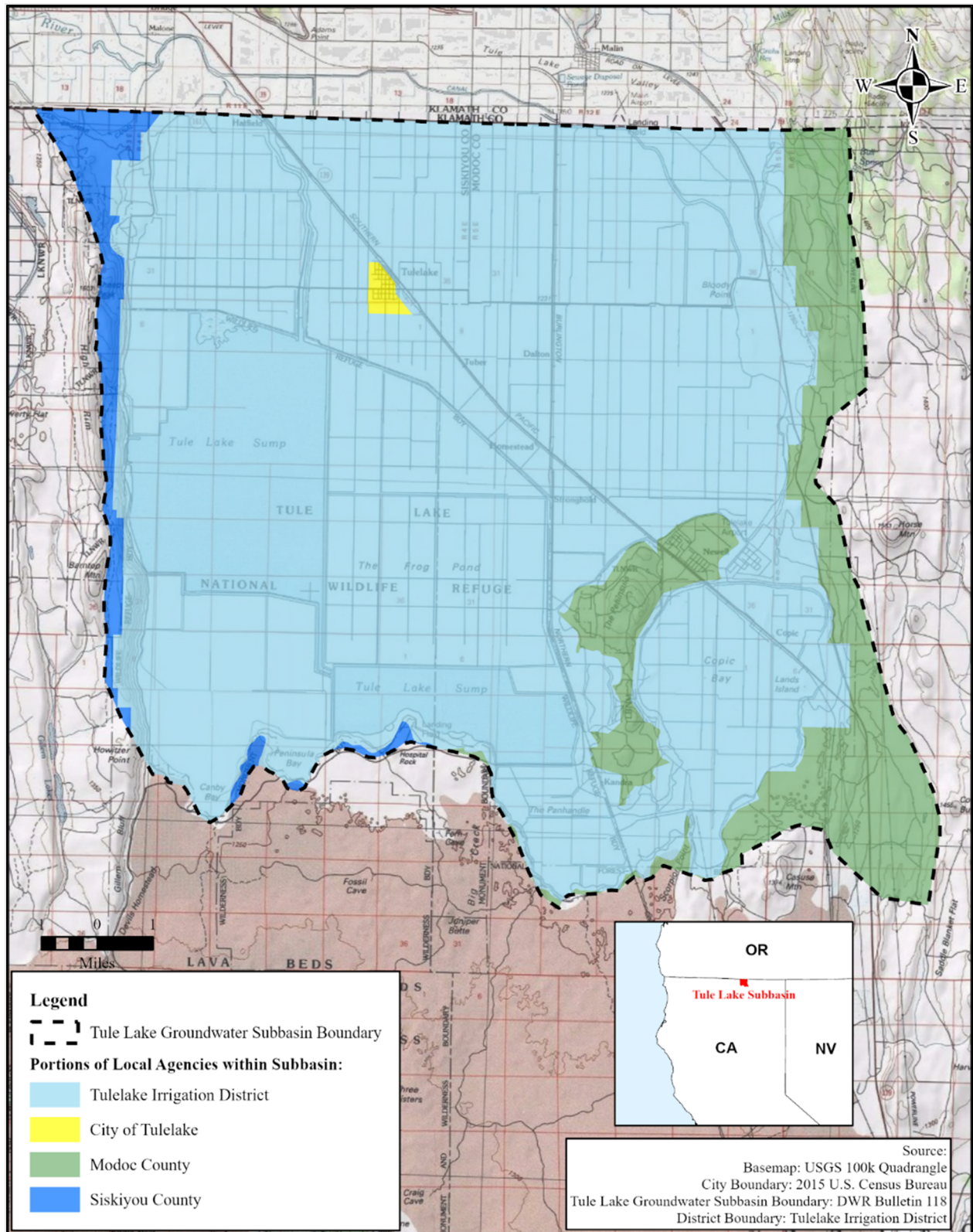


Figure 1-1. Location of the Groundwater Sustainability Agencies within the Tule Lake Subbasin

## 2 Basin Conditions

As described in the previous section, the drought conditions experienced in the Subbasin since 2019 have continued to result in reduced surface water supply from the Klamath Project. The lack of surface water has impacted groundwater conditions, as described in this Annual Report.

### Groundwater Conditions

Table 2-1 identifies the representative groundwater monitoring wells for the Tule Lake Subbasin. In addition, Table 2-1 identifies the minimum threshold (MT), measurable objective (MO), interim milestone (IM), and most recent fall measurement for each monitoring location. As identified in the GSP, MTs and MOs are associated with spring measurements and the IMs are set at the same levels as the MOs. In response to the DWR Letter, MTs for most of the representative monitoring wells were updated which is indicated in Table 2-1.

**Table 2-1. Summary of Sustainable Management Criteria and Most Recent Groundwater Level Measurement at Representative Monitoring Wells**

State Well Number	Minimum Threshold (ft bgs)	Measurable Objective (ft bgs)	Current Measurement Date	Current Measurement (ft bgs)
48N05E35F001M	29 <sup>o</sup>	8	1/14/2025	8.10
48N04E22M001M	120 <sup>o</sup>	15	1/14/2025	17.00
48N04E31M001M	29 <sup>o</sup>	23	8/22/2022	-*
48N04E19C001M	28 <sup>o</sup>	11	1/14/2025	11.20
47N05E04M001M	33 <sup>o</sup>	9	1/14/2025	9.30
47N05E01N001M	42 <sup>o</sup>	15	1/14/2025	16.00
46N05E21J001M	32	10	1/14/2025	8.20
46N05E01P001M	24	11	1/14/2025	14.30
41S12E19Q001W	50	6	1/14/2024	4.29
48N04E30F002M (TID Well 1)	79 <sup>o</sup>	38	12/18/2024	47.00
48N04E13K001M (TID Well 5)	90 <sup>o</sup>	42	12/18/2024	53.26
48N05E26D001M (TID Well 8)	74 <sup>o</sup>	48	12/18/2024	56.01
46N05E22D001M (TID Well 14)	54 <sup>o</sup>	40	12/18/2024	46.49
TL-T1 Q3B	35	27	12/18/2024	28.00
TL-T3 GP	16	12	12/18/2024	12.90

Note: ft bgs = feet below ground surface

\* Well has been discontinued due to issues with measurement as of 1/11/2022. The GSAs are evaluating replacement with a different monitoring well.

° MT updated in response to DWR Letter.

Figure 2-1 and Figure 2-2 identify the seasonal high (spring) and seasonal low (fall) groundwater elevations and contours within the Subbasin for 2024. These figures illustrate the general location and volume of groundwater extractions. Groundwater level data were obtained from the GSAs and the DWR's Water Data Library. Reported groundwater levels were used to develop groundwater elevation contours. Contours were developed based on available surrounding data, which is very limited. Groundwater level measurements from additional wells were added to generate the contours in the figures as compared to contours developed for prior annual reports. This was done in an attempt to analyze and illustrate groundwater levels over more of the Subbasin; however, the developed contours still do not encompass the entire Subbasin. There is also limited monitoring in the middle of the Subbasin. The GSP identifies this as a data gap, and on March 8, 2022, the GSAs applied to DWR for Technical Support Services (TSS) in order to assist with installation of a new monitoring well. In addition, on December 16, 2022, the Tulelake Subbasin GSAs filed a grant application through DWR's Sustainable Groundwater Management Grant Program. Unfortunately, the grant application was denied. Therefore, the GSAs are hopeful that the TSS application will be approved as it would provide resources that are greatly needed in the Subbasin for both Plan implementation and the projects and management actions described in this section of the report.



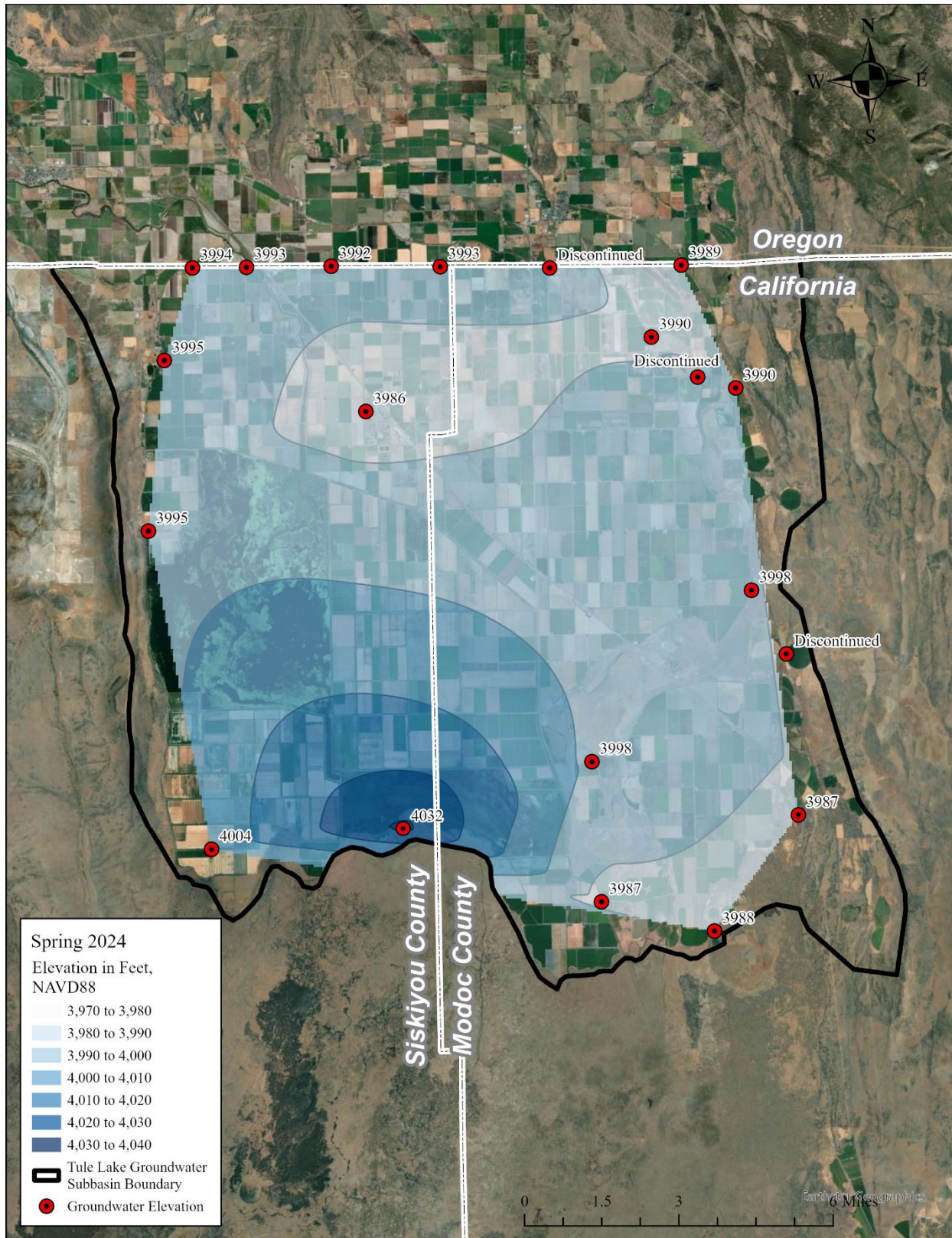


Figure 2-1. Spring 2024 Groundwater Surface Elevations



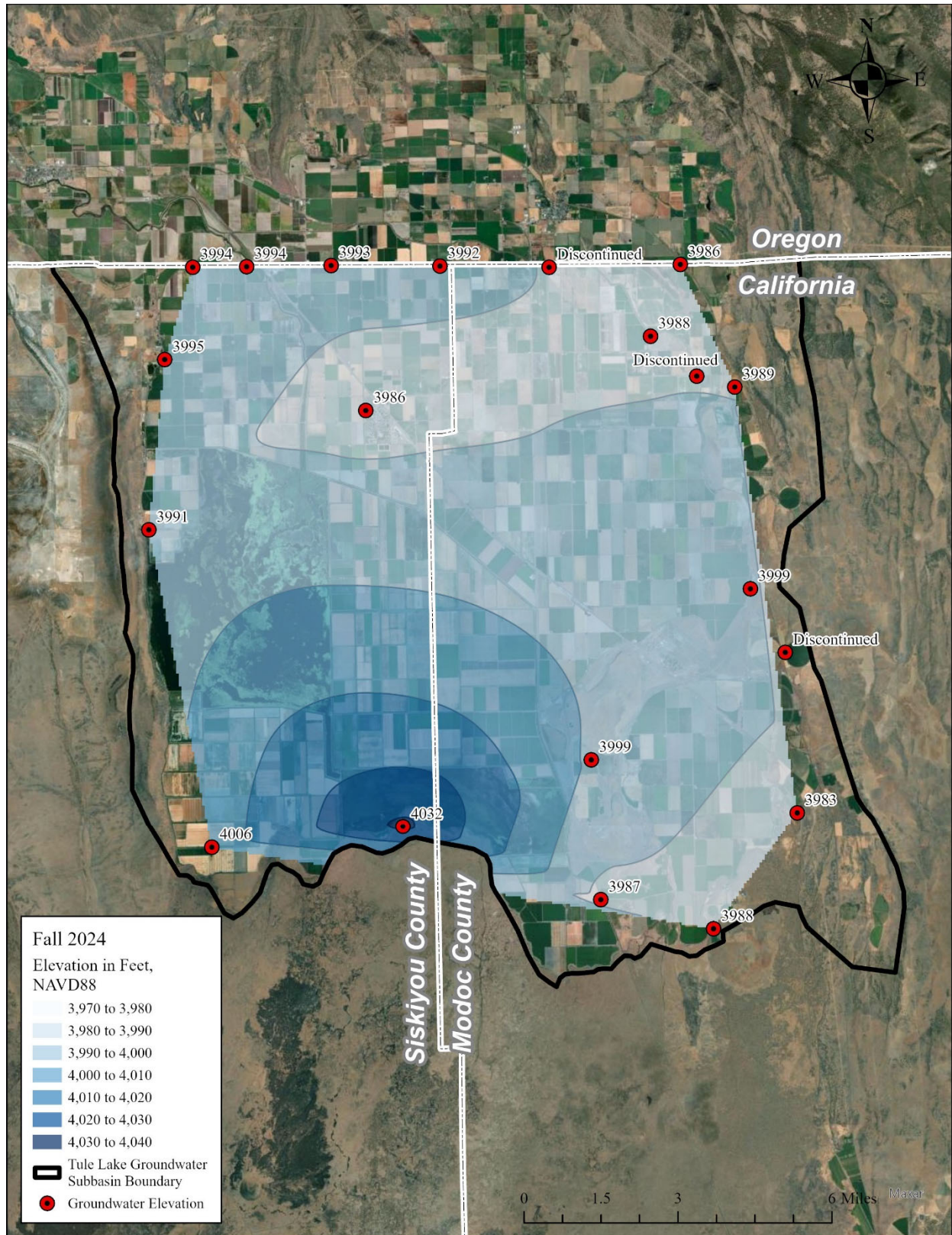


Figure 2-2. Fall 2024 Groundwater Surface Elevations

In addition to Table 2-1, Figure 2-1 and Figure 2-2, hydrographs of groundwater elevations and WY types showing historical data through Fall 2024 are included in Appendix B of this Annual Report. As shown on the hydrographs for TID Well 5 and TID Well 8, there have been historical exceedances of the recently updated MT for each of those representative monitoring wells; however, those were pumping water level measurements. During implementation of this GSP, static groundwater levels are used for the purpose of monitoring MTs and MOs.

## Water Quality

The GSAs established a minimum threshold of 900 milligrams per liter (mg/L) of Total Dissolved Solids and a minimum threshold of 9 mg/L of Nitrate at all representative monitoring sites for the water quality sustainability indicator within the Subbasin. Table 2-2 identifies the representative groundwater monitoring wells for water quality. In addition, Table 2-2 identifies the MT, MO, and most recent reported measurement for each monitoring location. Groundwater water quality data were obtained from the California Drinking Water Watch website (<https://sdwis.waterboards.ca.gov/PDWW/index.jsp>). As identified in the GSP, the IMs are set at the same levels as the MOs.

**Table 2-2. Water Quality Quantitative Sustainable Management Criteria**

WQ Monitoring Well	Nitrate (mg/L)			Total Dissolved Solids (mg/L)		
	MO	MT	Measurement (Date)	MO	MT	Measurement (Date)
TULELAKE WELL 03	2	9	ND (4/21/2021)	205	900	200 (8/26/2024)
TULELAKE WELL 01	2	9	ND (12/17/2015)	190	900	190 (10/31/2018)
KBNWR WELL 01	2	9	ND (6/6/2023)	n/a	900	n/a
NEWELL WELL 01	2	9	0.11 (9/18/2024)	540	900	540 (12/19/2017)
NEWELL WELL 03	2	9	ND (10/10/2023)	610	900	610 (12/19/2017)

Note: ND = Not Detected

## Change in Groundwater Storage

Change in groundwater storage was estimated using ArcGIS desktop software and Subbasin characteristics. Change in groundwater storage presented in this section is based on an evaluation of spring groundwater levels. The spring contour map included in Figure 2-1 was prepared based on groundwater elevation data collected in spring 2024 and uses Nearest Neighbor interpolation to generate a raster, which is further processed to develop contours at a 10 foot interval. Consecutive contour rasters (e.g., spring 2023 and spring 2024) were then compared to create a change in elevation map, which is shown below in Figure 2-3. From this map, the mean groundwater elevation change within the Subbasin was calculated. This was then multiplied by the total acreage of the Subbasin and an estimated specific yield of 0.05 for the Subbasin<sup>3</sup> to obtain an estimated change in groundwater storage.

<sup>3</sup> (DWR, 2002). Tulelake Subbasin—Hydrogeologic Investigation. [Draft Report]. California Department of Water Resources. California. October 8, 2002.



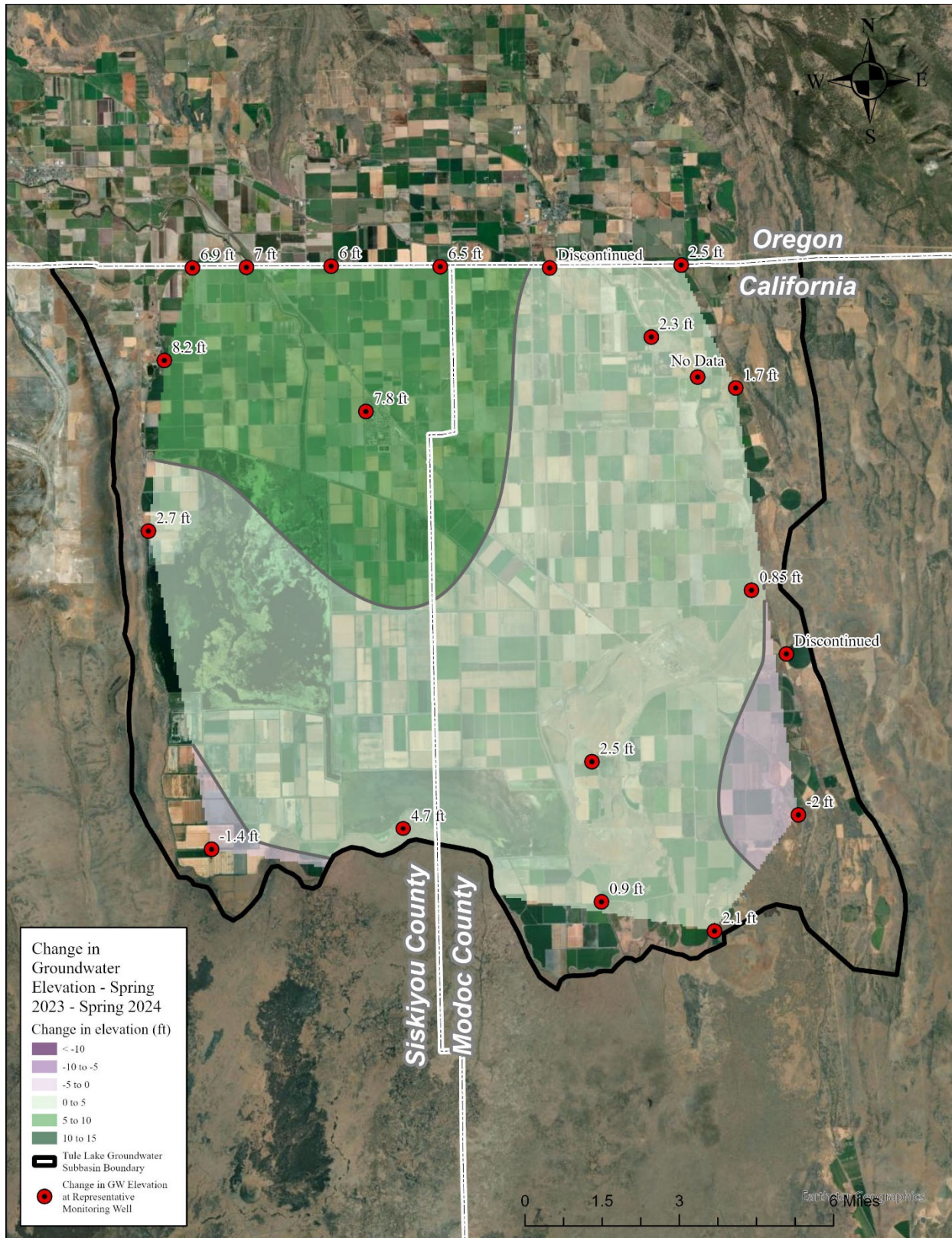


Figure 2-3 Change in Spring Groundwater Elevations from 2023 to 2024

Table 2-3 provides an annual summary of the estimated change in groundwater storage.

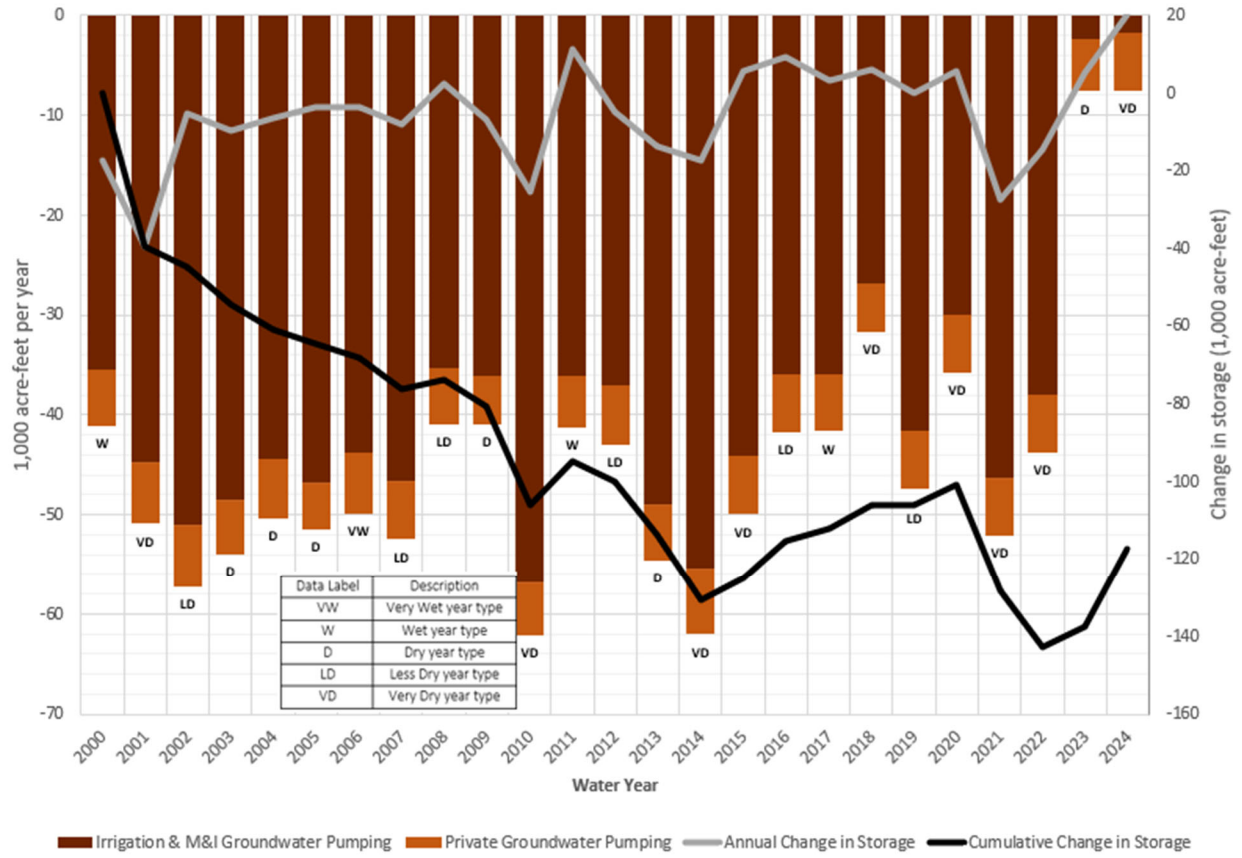
**Table 2-3. Change in Groundwater Storage (TAF)**

WY	Change in Groundwater Storage
2018-2019	(0.08)
2019-2020	5.45
2020-2021	(27.65)
2021-2022	(14.38)
2022-2023	5.21 <sup>1</sup>
2023-2024	20.20

<sup>1</sup>The change in groundwater storage for 2022-23 was based on an erroneous reading for TL-T1 Q3B, which has since been corrected. The WY 2023 report identified an estimated change in storage of 8.89 TAF. As shown in Table 2-3, the correction resulted in an estimated change in groundwater storage of 5.21 TAF. This change does not affect the conclusions reached in the previous report.

Output from the model developed for the Tule Lake Subbasin GSP was used to estimate the historical change in groundwater storage for the Subbasin for 2000 through 2018. For the purposes of this Annual Report, and as was done in the prior Annual Reports, the change in groundwater storage from 2023 to 2024 was estimated by comparing seasonal high groundwater contours. The results of this analysis for WY 2019 through WY 2024 are shown in Table 2-3. Figure 2-4 shows the annual change in storage and cumulative change in storage along with an indication of the WY type. In addition, the annual estimated groundwater usage by users within the District service area (Irrigation & M&I Groundwater Pumping) and users outside of the District service area (Private Groundwater Pumping) is shown in Figure 2-4.





**Figure 2-4. Estimated Groundwater Pumping and Change in Storage**

## Groundwater Extractions

SGMA Regulations require that the Annual Report include groundwater extraction information for each water use sector. Table 2-4 provides a summary of the groundwater extractions within the Subbasin during WYs 2019 – 2024. The notes below Table 2-4 identify how the groundwater extractions were measured or estimated. In addition, Appendix C includes the templates provided by DWR for this information. Figure 2-1 through Figure 2-2 provide a general location of where the groundwater extractions occurred.

**Table 2-4. Groundwater Extractions (TAF)**

WY	Water Use Sector			
	Total	Urban <sup>1</sup>	Agricultural	
			District	Private <sup>2</sup>
2019	47.4	0.3	41.2 <sup>3</sup>	5.9
2020	35.8	0.4	29.6 <sup>4</sup>	5.8
2021	52.1	0.4	45.9 <sup>4</sup>	5.8
2022	43.8	0.3	37.7 <sup>4</sup>	5.8
2023	7.6	0.3	2.0 <sup>4</sup>	5.3
2024	7.5	0.4	1.3 <sup>4</sup>	5.8

<sup>1</sup> Values obtained from the City of Tulelake, which measures its extractions with magnetic flow meters.

<sup>2</sup> Values based on the calculated average annual extractions by private groundwater pumping, as calculated by the GSP Model for WYs 2000 through 2018, during similar WY types. The estimated annual extractions for these years are shown in Figure 2-4.

<sup>3</sup> Value based on the calculated average annual extractions within the District, as calculated by the GSP Model for WYs 2000 through 2018, during similar WY types. The estimated annual extractions for this year is shown in Figure 2-4.

<sup>4</sup> Values obtained from Tulelake Irrigation District, which measures its extractions with propeller flow meters.

## Surface Water Supply

SGMA Regulations require that the Annual Report include surface water supply information for each water use sector.

Table 2-5 provides a summary of the surface water supply within the Subbasin during WYs 2019 – 2023. As identified in the GSP, the surface water supplier for the Subbasin is the Reclamation, which is the entity that operates the Klamath Project. The point of diversion for the Tulelake Irrigation District is Station 48, which is located in Oregon. For the purposes of this Annual Report, measured deliveries from the Klamath Project at the J Canal Headworks were used, as that is the location where the supply enters the Subbasin. As identified in the GSP, return flow from agricultural irrigations upstream of TID may also contribute to the surface water supply in any given year. Therefore, the quantities in

Table 2-5 represent the volume of Project water and return flow that was available at the J Canal Headworks. In addition, Appendix D includes the templates provided by DWR for this information.

**Table 2-5. Surface Water Supply (TAF)**

WY	Water Use Sector			
	Total	Urban	Agricultural	
			District	Private
2019	119.7	0.0	119.7	0.0
2020	68.4	0.0	68.4	0.0
2021	16.2	0.0	16.2	0.0
2022	35.4	0.0	35.4	0.0
2023	172.6	0.0	172.6	0.0
2024	162.0	0.0	162.0	0.0

## Total Water Use

SGMA Regulations require that the Annual Report include the total water use for each water use sector. Table 2-6 provides a summary of the total water use, which is the combined groundwater use (Table 2-4) and surface water use (Table 2-5) for WYs 2019-2023 by water use sector. See Table 2-4 and Table 2-5 for additional information on groundwater and surface water use. In addition, Appendix E includes the templates provided by DWR for this information.

**Table 2-6. Total Water Use (TAF)**

WY	Water Use Sector			
	Total	Urban	Agricultural	
			District	Private
2019	167.1	0.3	160.9	5.9
2020	104.2	0.4	98.0	5.8
2021	68.3	0.4	62.1	5.8
2022	79.2	0.3	73.1	5.8
2023	180.2	0.3	174.6	5.3
2024	169.5	0.4	163.3	5.8

### **3 GSP Implementation Progress**

As identified in the GSP, the Tule Lake Subbasin is currently being sustainably managed. Therefore, no projects or management actions are required to achieve sustainability; however, the Tule Lake Subbasin GSAs have identified projects and management actions that can improve their understanding of the groundwater Subbasin. Due to the standing of the Subbasin, the projects and management actions identified in the GSP are intended to help reduce or eliminate data gaps and will be implemented based on the availability of resources and funding. Similarly, interim milestones are intended to be set to guide conditions during implementation of the GSP in order to define a pathway to reach sustainability within 20 years. In the Tule Lake Subbasin, the interim milestones were not assumed to be needed, as implementation activities are not required to achieve the measurable objectives. However, for the purpose of the GSP, the interim milestones were set at the same levels as the measurable objectives. See Table 2-1 for an overview of the most recent groundwater level measurements and the associated interim milestones at the representative groundwater monitoring wells. Similarly, see Table 2-2 for a summary of the representative water quality monitoring locations.

#### **Implementation of Projects and Management Actions**

The purpose of this section of the Annual Report is to provide an update on GSP implementation progress of projects and management actions. Projects and management actions identified in the GSP include development of a well inventory, construction of dedicated groundwater monitoring wells, expansion of the water quality monitoring network to include additional wells, potential groundwater dependent ecosystems field investigations, groundwater recharge, domestic well assistance program, and an adaptive management strategy. On December 16, 2022, the Tulelake Subbasin GSAs filed a grant application through DWR's Sustainable Groundwater Management Grant Program. Unfortunately, the grant application was denied. The GSAs will continue to apply for grant opportunities that may provide the resources that are greatly needed in the Subbasin for both Plan implementation and the projects and management actions described in this section of the report. Table 3-1 provides a project and management action update summary.

**Table 3-1. Summary of Projects and Management Actions**

Project or Management Action	Update
Perform Well Inventory	No update to provide at this time. This effort is ongoing.
File for well installation application with TSS	Technical Support Services General Application filed on March 8, 2022. Upon approval the GSAs will work with DWR to prepare and file the Service Request Application.
Add 2 wells to WQ Monitoring Network	No update to provide at this time. This effort is ongoing.
Complete field inspections of GDEs	During May 2024 a field inspection was conducted to each of the potential GDEs identified in the figures included with Appendix M of the Revised Tulelake Subbasin GSP, which was submitted on July 16, 2024. Some of the areas were inaccessible due to their location on private property. The GSAs and their technical team are reviewing the photographs collected during the field inspection to determine next steps. This effort is ongoing.
Review AEM survey data	The Tulelake Subbasin technical team has performed an initial review of the AEM survey data. This information will be incorporated into the 5-Year Plan update as appropriate.
Recharge via Operation of Station 48	During WY 2022 through WY 2024 Station 48 was reoperated such that Lost River Improved Channel flowed along its natural path into the Subbasin, which provided TID with water to charge irrigation canals and drains during the winter. Reviews are ongoing to better understand and quantify the benefit of this reoperation.
Provide Domestic Well Assistance	In reviewing DWR's Dry Well Reporting system, it appears that there have not been any dry wells reported since 2022. The GSAs are not aware of any dry well issues experienced during water year 2024. In addition, the City of Tulelake is in the process of expanding its service area, which will result in decreased reliance of domestic wells within the Subbasin.
Adaptive Management Strategy	As in prior years, TID assisted with the Drought Response Agency programs in 2024, which are implemented to address supply shortages from the Klamath Project. This included a demand management program that resulted in approximately 6,670 acres within the District not irrigated during 2024. During WY 2024, the District received a final draft system improvement plan, which outlined specific projects that will allow for operational flexibility and potential new opportunities to adaptively manage the system. The District is currently pursuing grant funding for these projects.

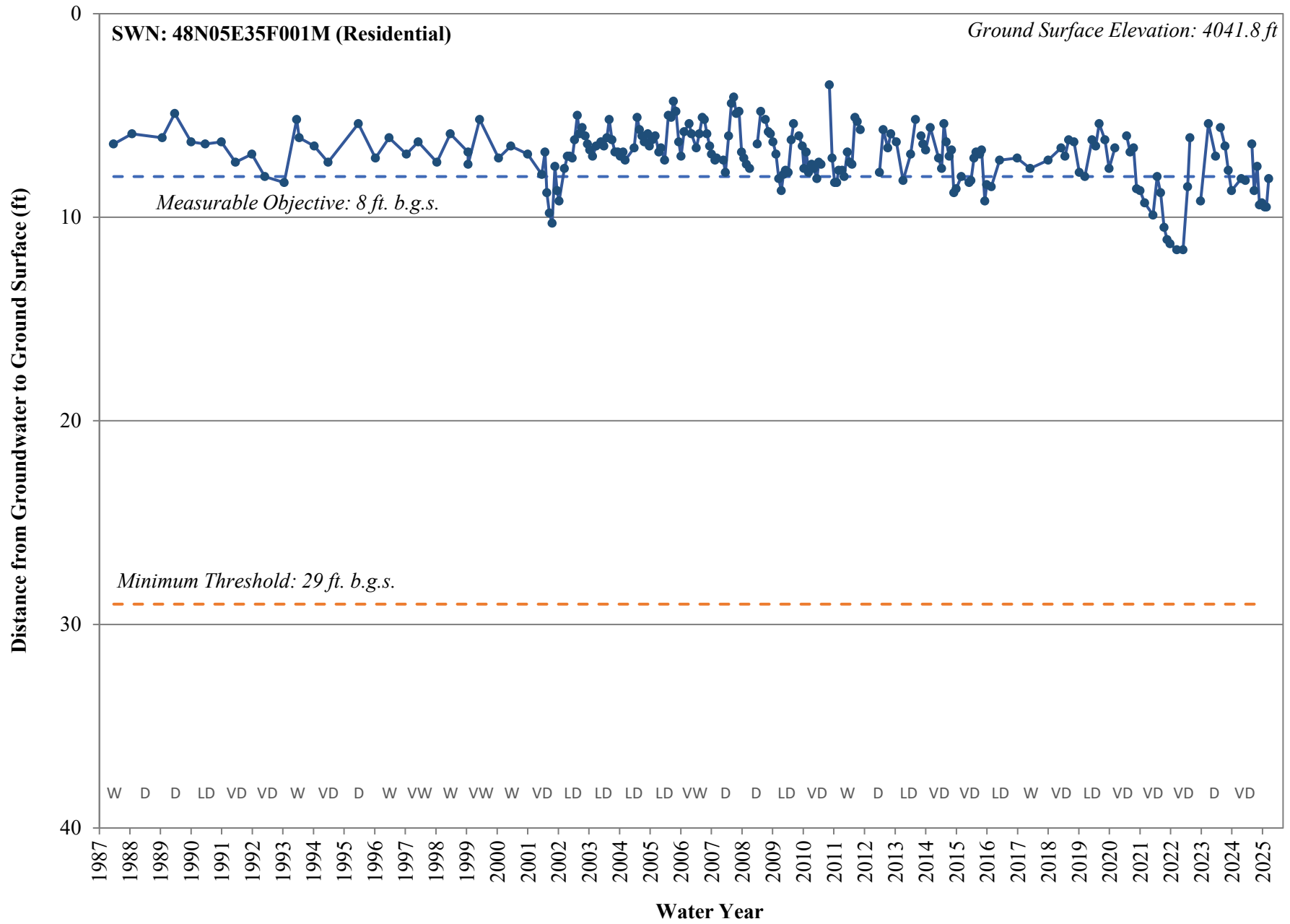
## Appendix A. Elements Guide Checklist

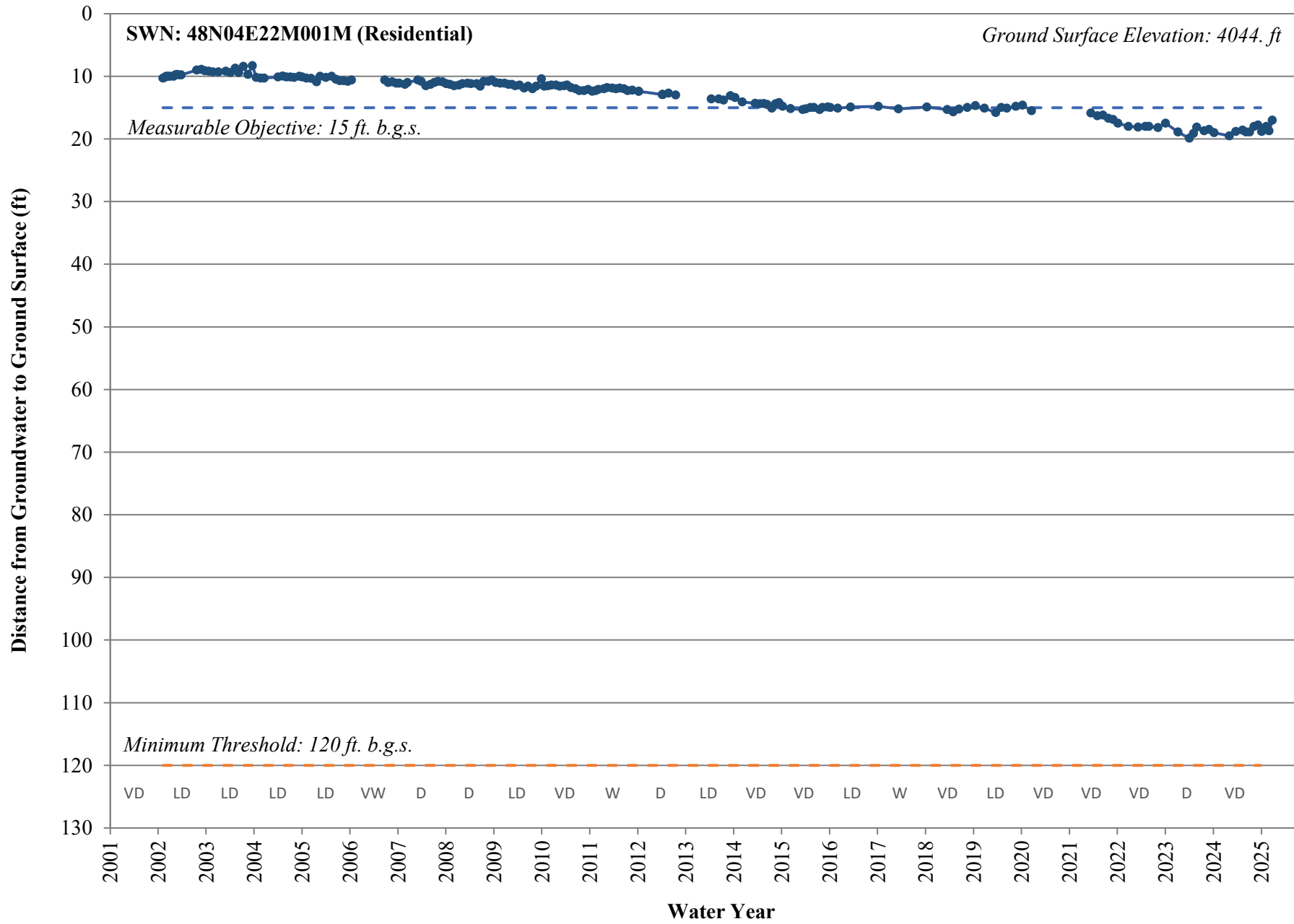
<b>Groundwater Sustainability Plan Annual Report Elements Guide</b>		
Basin Name	Tule Lake Subbasin	
GSP Local ID		
<b>California Code of Regulations - GSP Regulation Sections</b>	<b>Groundwater Sustainability Plan Elements</b>	<b>Document page number(s) that address the applicable GSP element.</b>
<b>Article 5</b>	<b>Plan Contents</b>	
<b>Subarticle 4</b>	<b>Monitoring Networks</b>	
<b>§ 354.40</b>	<b>Reporting Monitoring Data to the Department</b>	
	Monitoring data shall be stored in the data management system developed pursuant to Section 352.6. A copy of the monitoring data shall be included in the Annual Report and submitted electronically on forms provided by the Department.	Table 2-1 (Page 2-1), Table 2-2 (Page 2-5), Appendix B
	Note: Authority cited: Section 10733.2, Water Code. Reference: Sections 10728, 10728.2, 10733.2 and 10733.8, Water Code.	
<b>Article 7</b>	<b>Annual Reports and Periodic Evaluations by the Agency</b>	
<b>§ 356.2</b>	<b>Annual Reports</b>	
	Each Agency shall submit an annual report to the Department by April 1 of each year following the adoption of the Plan. The annual report shall include the following components for the preceding water year:	
	(a) General information, including an executive summary and a location map depicting the basin covered by the report.	Executive Summary (Pages ES-1 through ES-2), Section 1 (Page 1-1), Figure 1-1 (Page 1-2)
	(b) A detailed description and graphical representation of the following conditions of the basin managed in the Plan:	
	(1) Groundwater elevation data from monitoring wells identified in the monitoring network shall be analyzed and displayed as follows:	
	(A) Groundwater elevation contour maps for each principal aquifer in the basin illustrating, at a minimum, the seasonal high and seasonal low groundwater conditions.	Figure 2-1 (Page 2-3), Figure 2-2 (Page 2-4)
	(B) Hydrographs of groundwater elevations and water year type using historical data to the greatest extent available, including from January 1, 2015, to current reporting year.	Appendix B

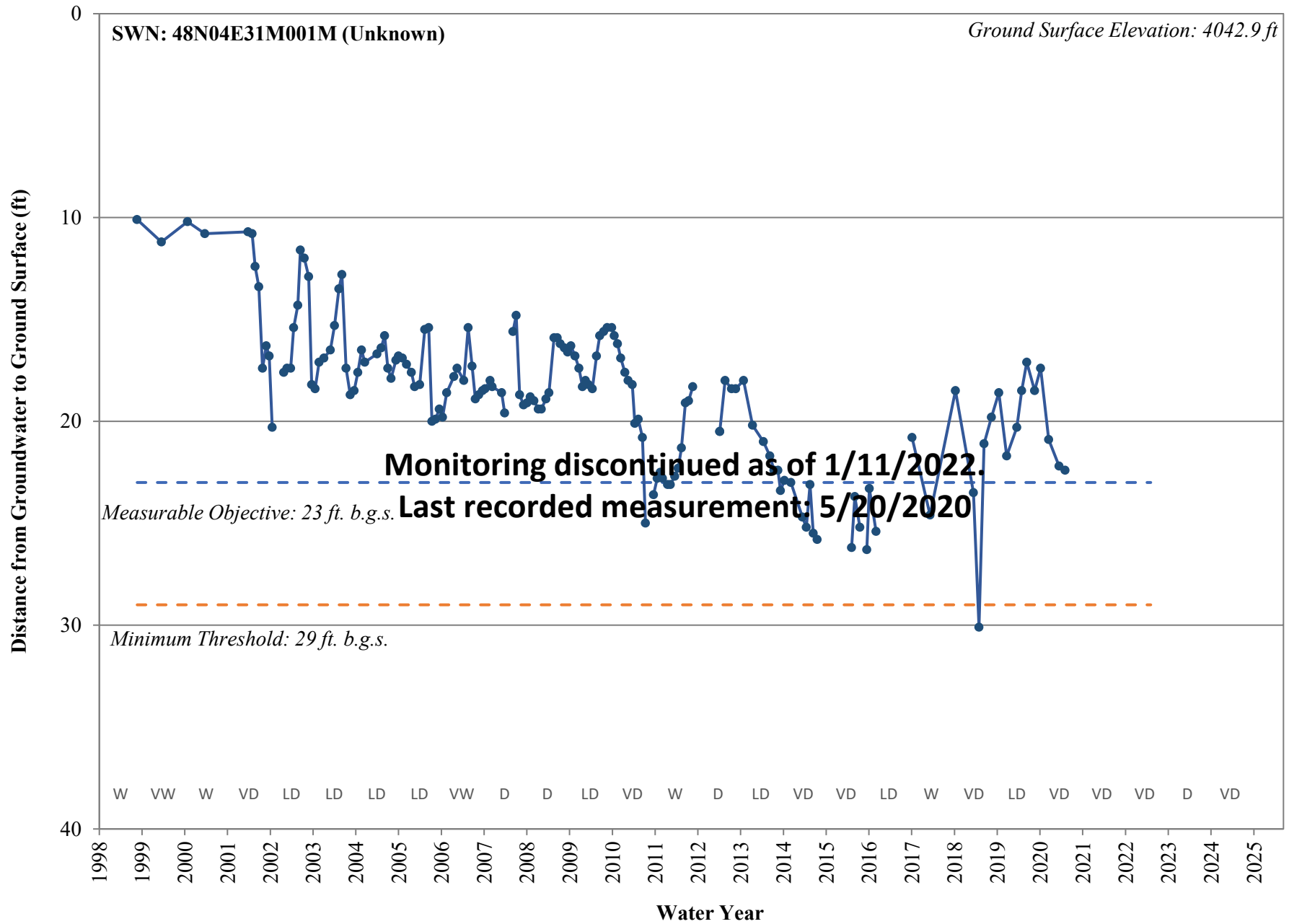


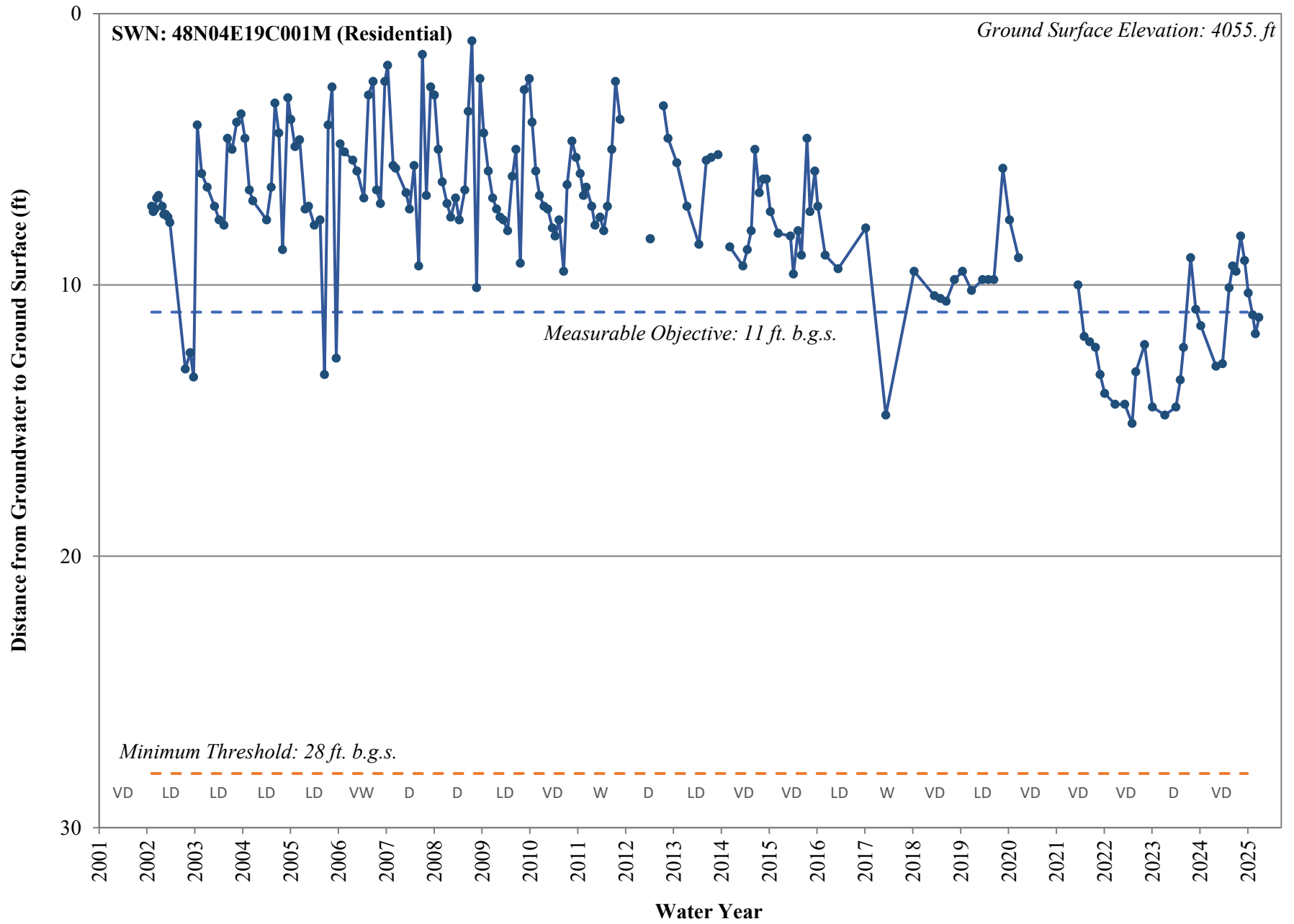
<b>California Code of Regulations - GSP Regulation Sections</b>	<b>Groundwater Sustainability Plan Elements</b>	<b>Document page number(s) that address the applicable GSP element.</b>
	(2) Groundwater extraction for the preceding water year. Data shall be collected using the best available measurement methods and shall be presented in a table that summarizes groundwater extractions by water use sector, and identifies the method of measurement (direct or estimate) and accuracy of measurements, and a map that illustrates the general location and volume of groundwater extractions.	Figure 2-3 (Page 2-6), Table 2-3 (Page 2-7), Figure 2-4 (Page 2-8), Table 2-4 (Page 2-9)
	(3) Surface water supply used or available for use, for groundwater recharge or in-lieu use shall be reported based on quantitative data that describes the annual volume and sources for the preceding water year.	Table 2-5 (Page 2-10), Appendix D
	(4) Total water use shall be collected using the best available measurement methods and shall be reported in a table that summarizes total water use by water use sector, water source type, and identifies the method of measurement (direct or estimate) and accuracy of measurements. Existing water use data from the most recent Urban Water Management Plans or Agricultural Water Management Plans within the basin may be used, as long as the data are reported by water year.	Table 2-6 (Page 2-11), Appendix E
	(5) Change in groundwater in storage shall include the following:	
	(A) Change in groundwater in storage maps for each principal aquifer in the basin.	Figure 2-3 (Page 2-6)
	(B) A graph depicting water year type, groundwater use, the annual change in groundwater in storage, and the cumulative change in groundwater in storage for the basin based on historical data to the greatest extent available, including from January 1, 2015, to the current reporting year.	Figure 2-4 (Page 2-8)
	(c) A description of progress towards implementing the Plan, including achieving interim milestones, and implementation of projects or management actions since the previous annual report.	Table 2-1 (Page 2-1), Table 2-2 (Page 2-5), Section 3 (Pages 3-1 through 3-2)

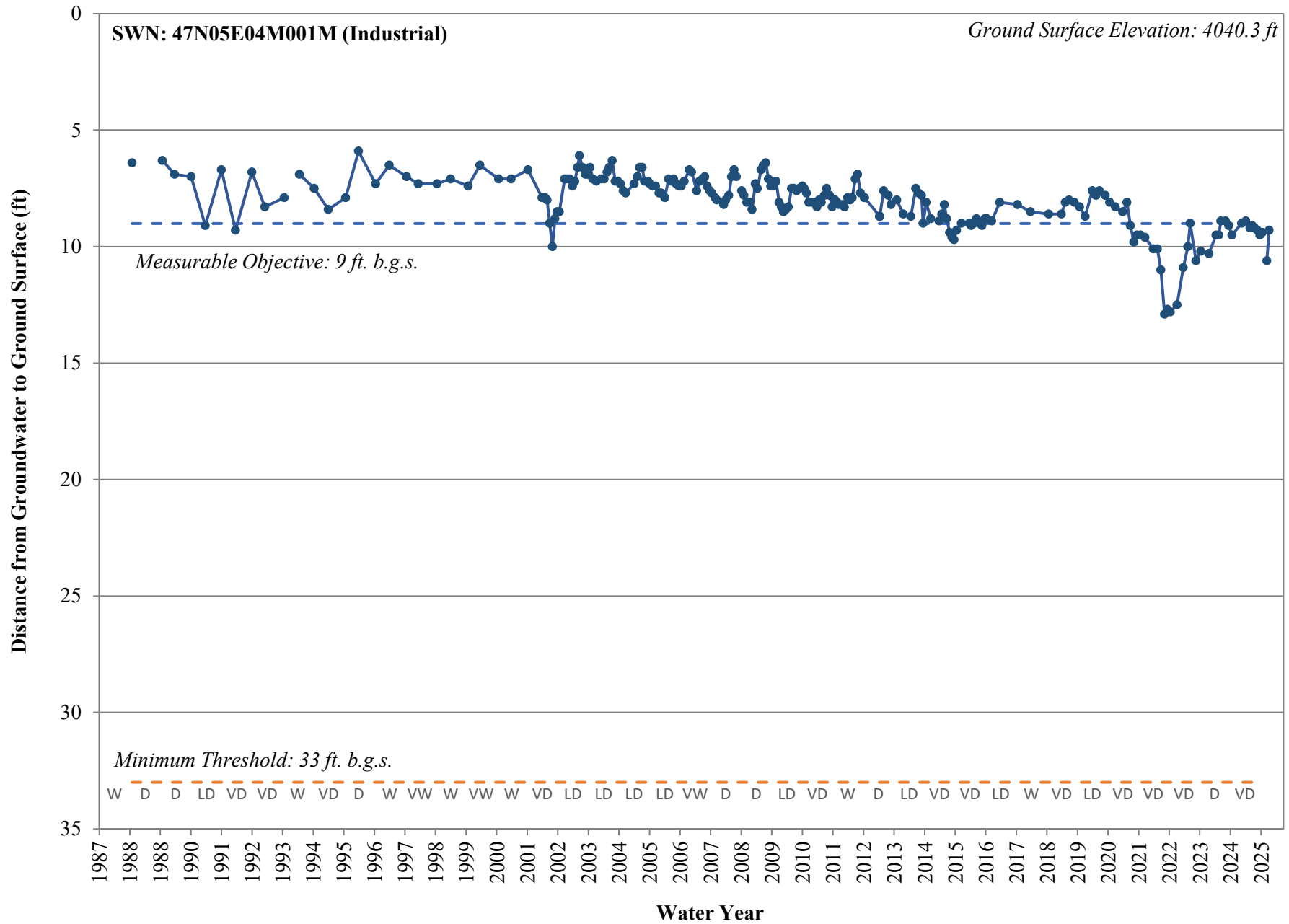
## Appendix B. Groundwater Monitoring Well Hydrographs

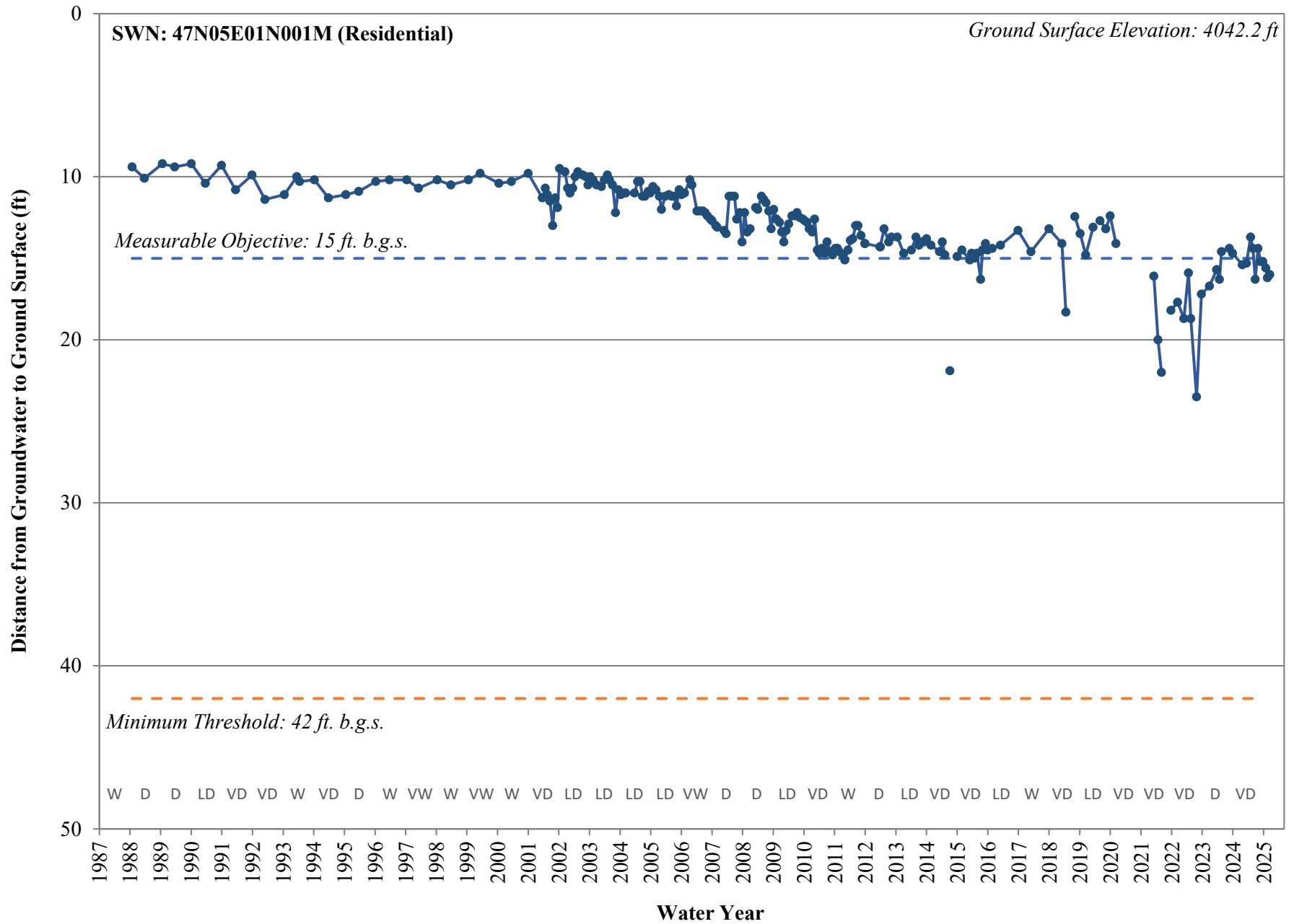




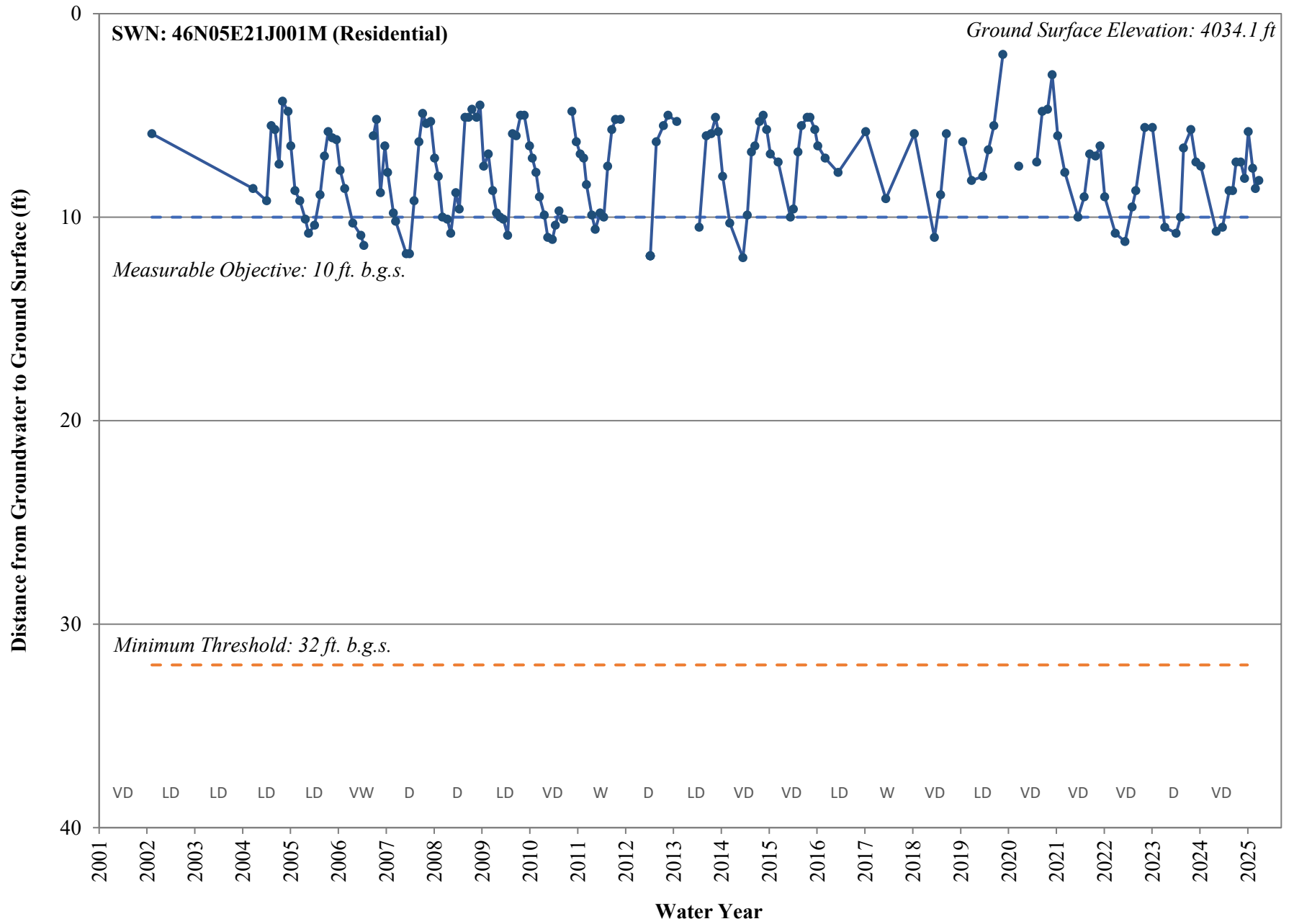


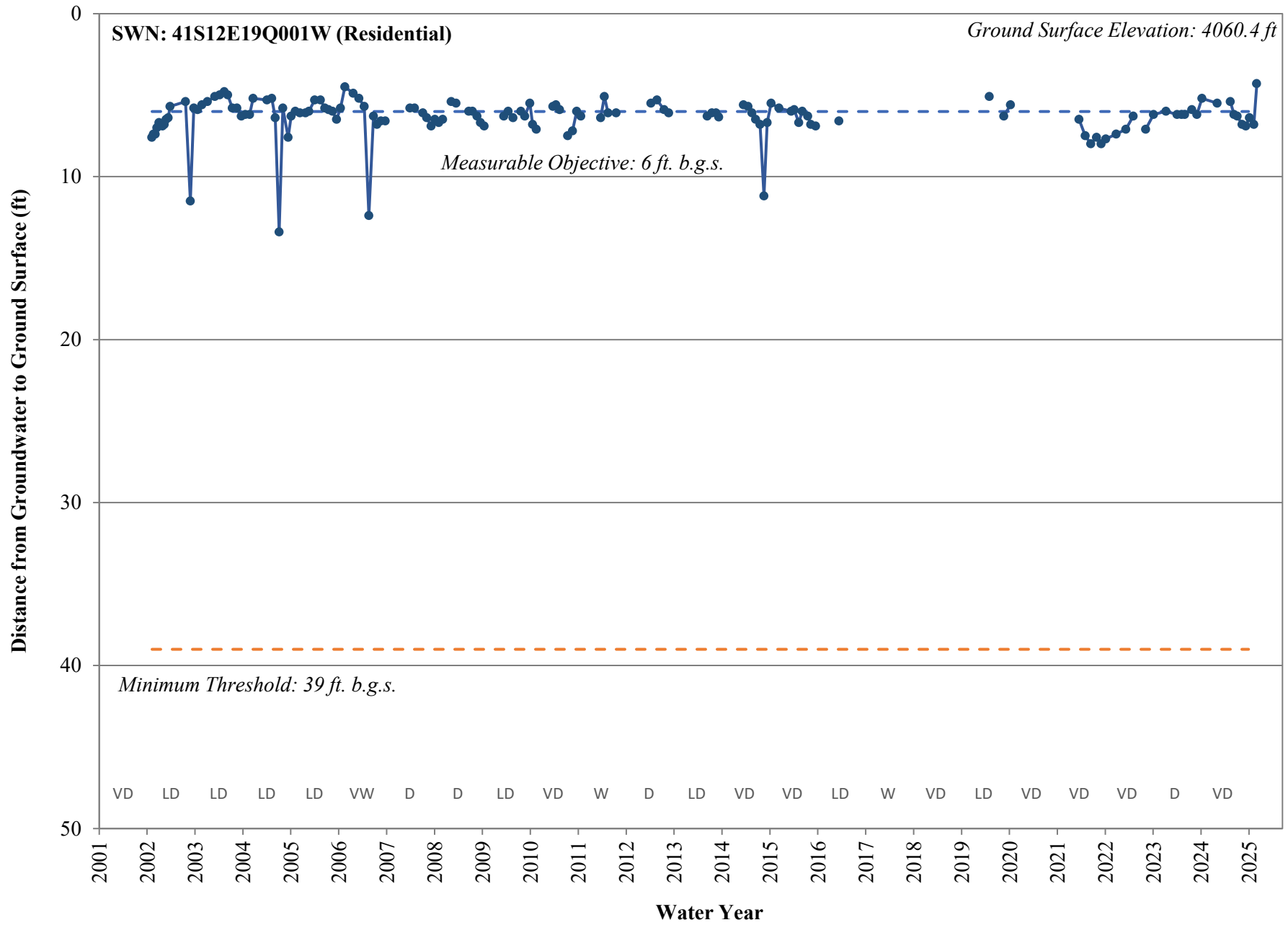


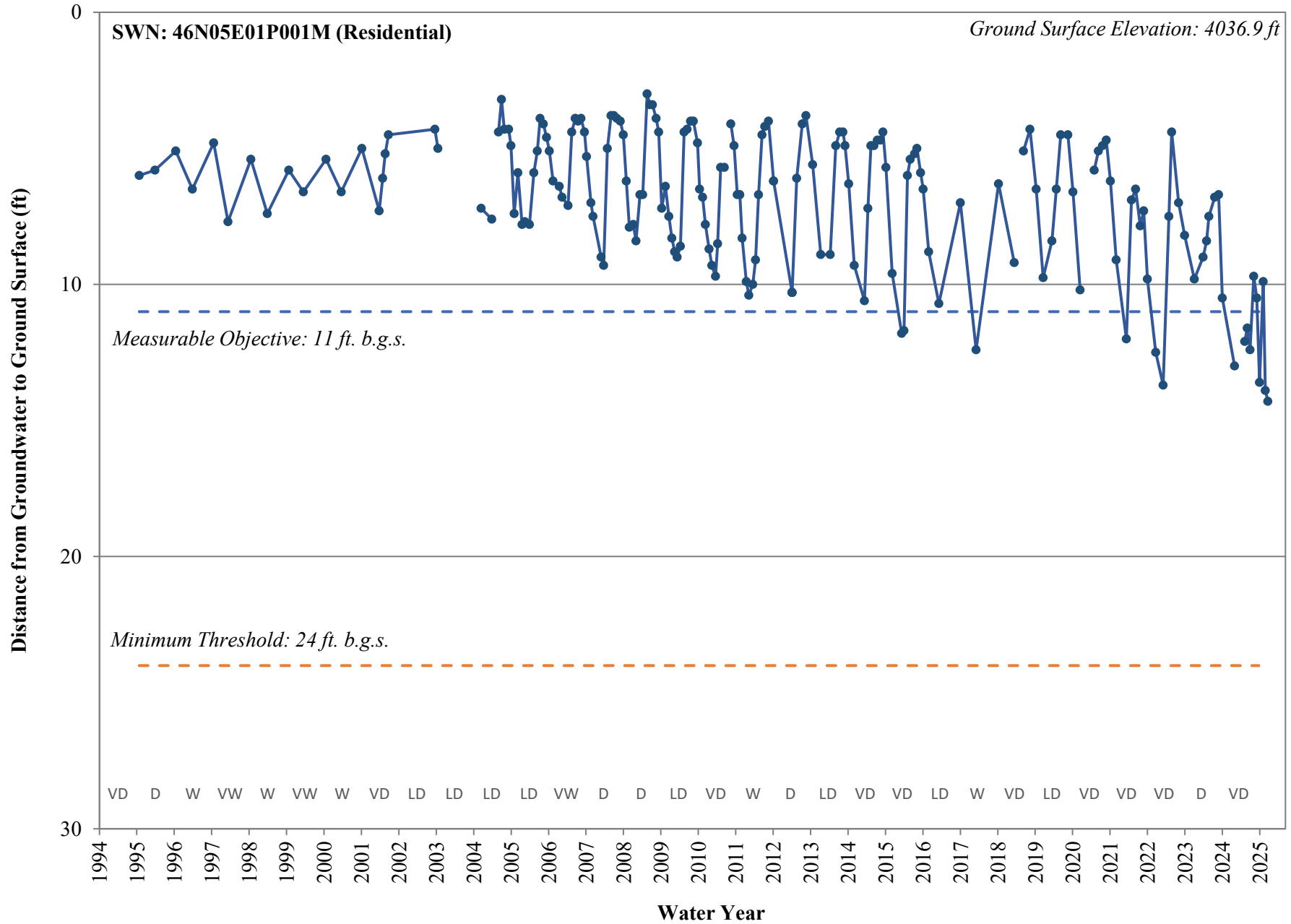


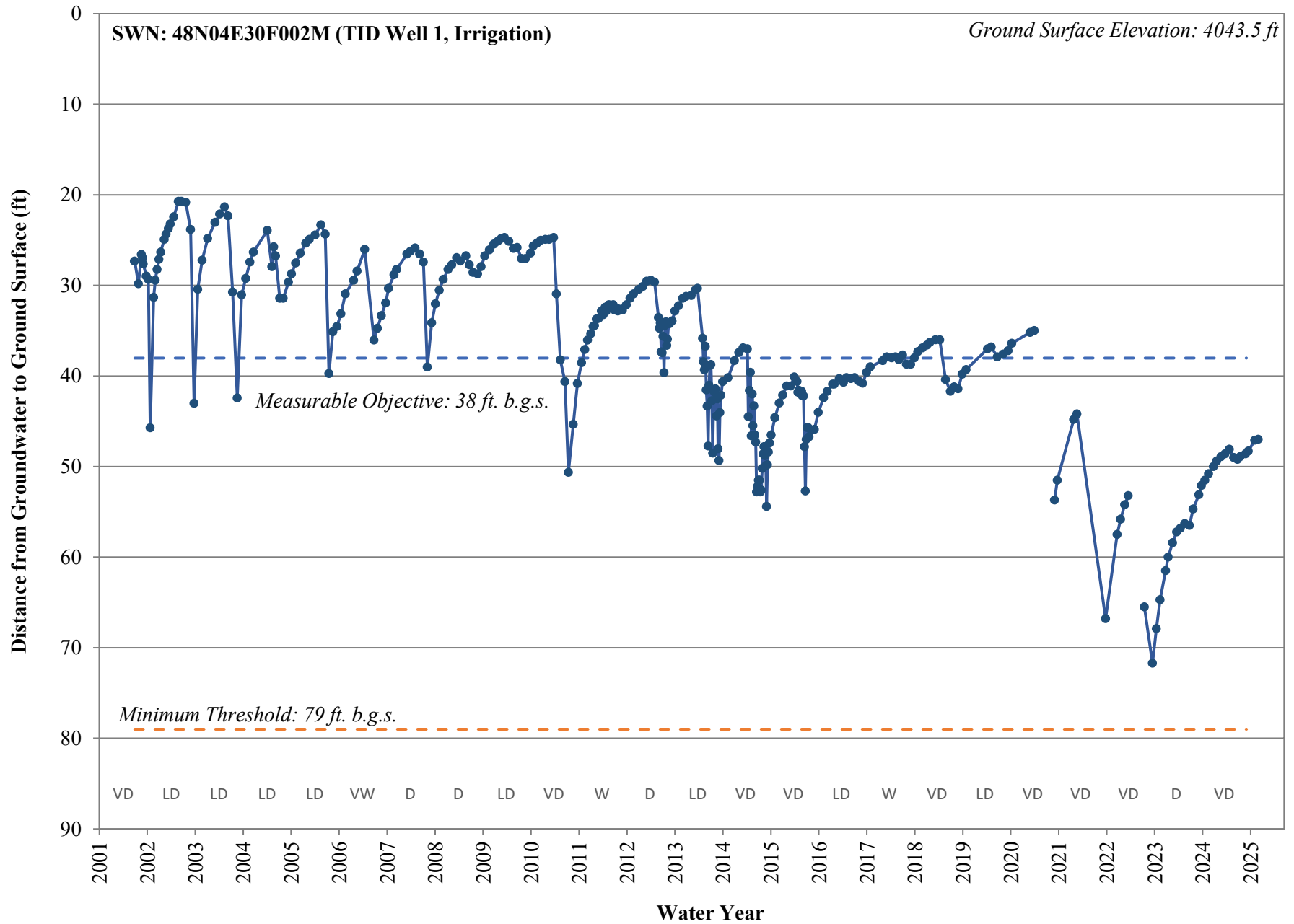


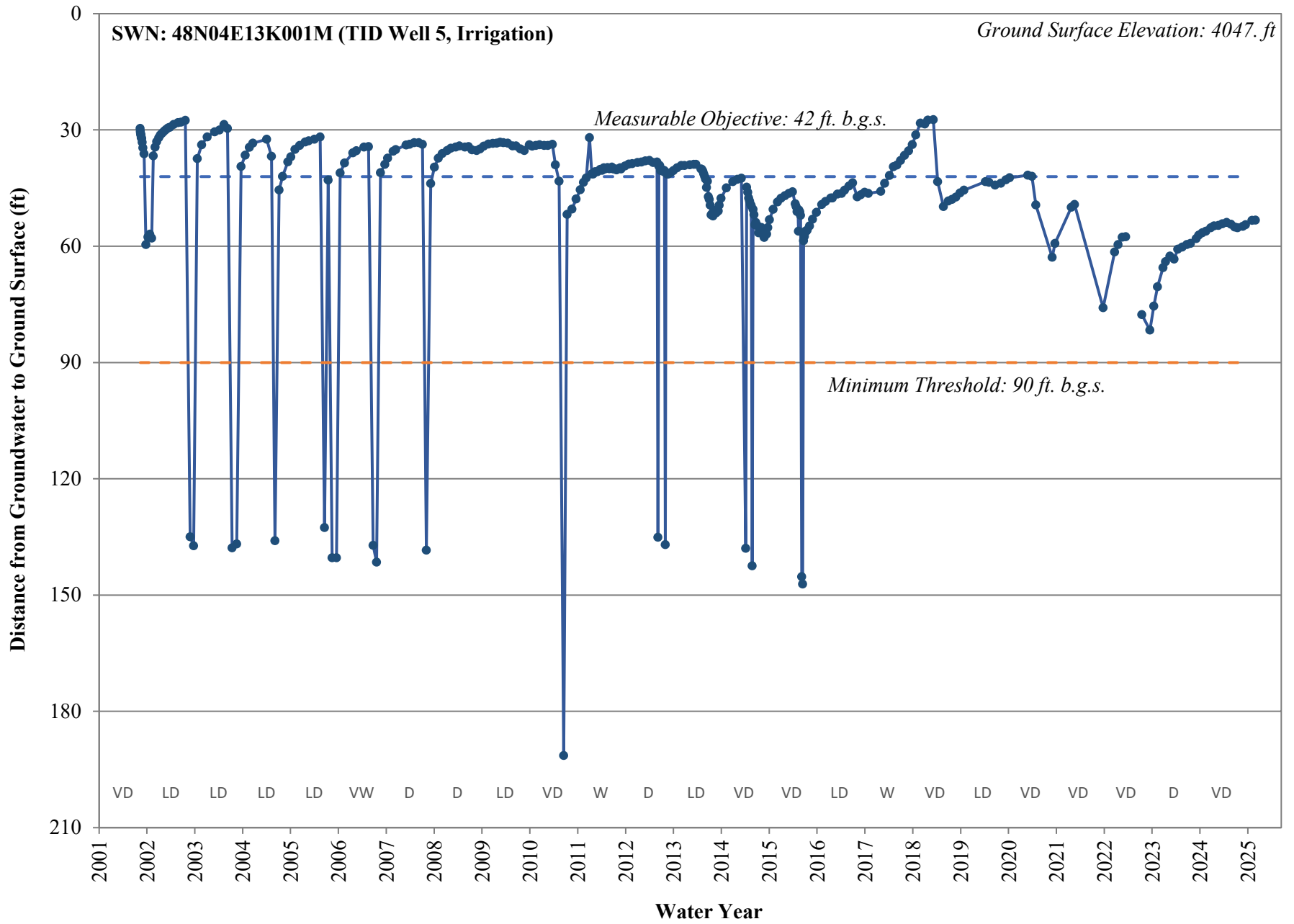


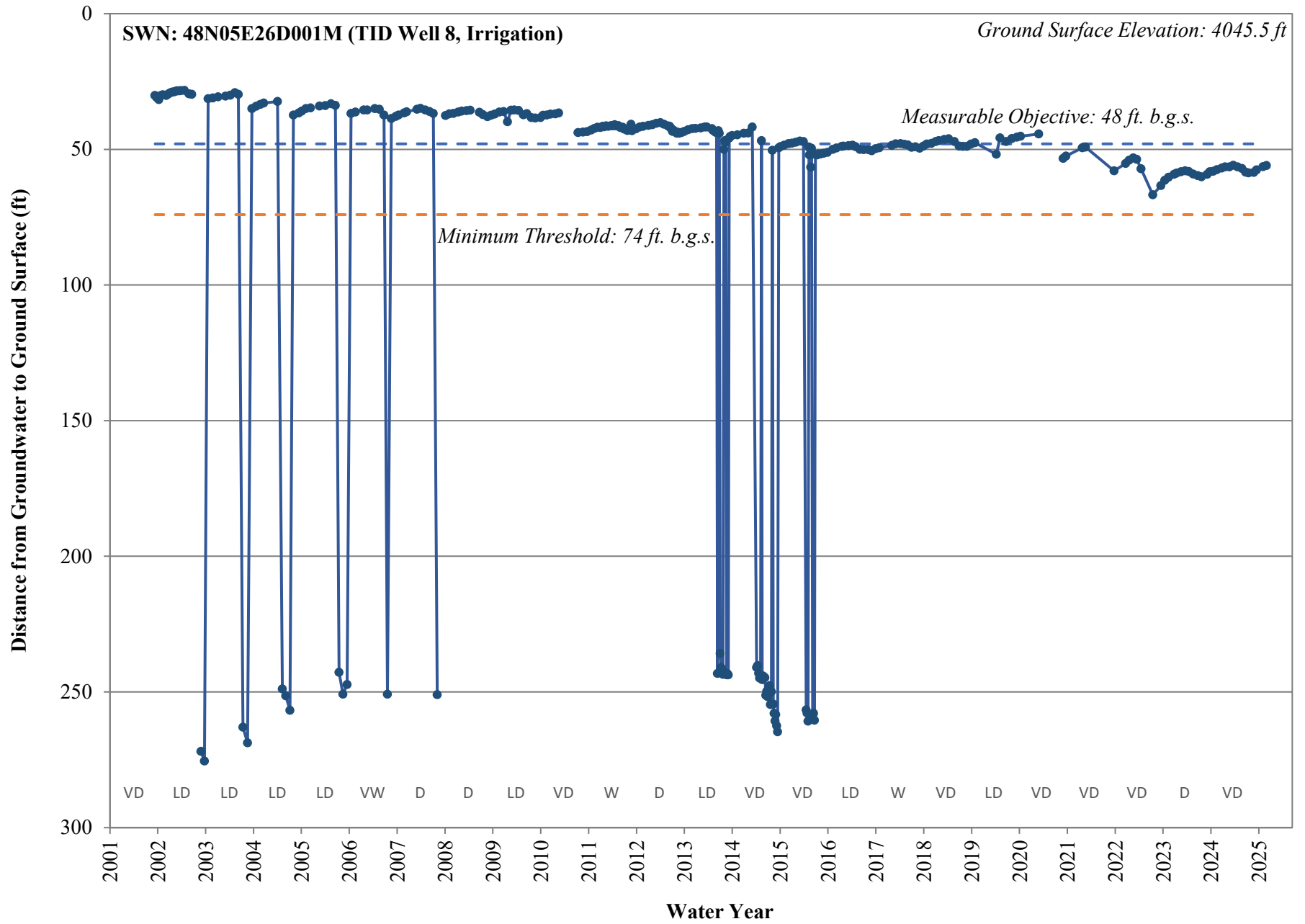


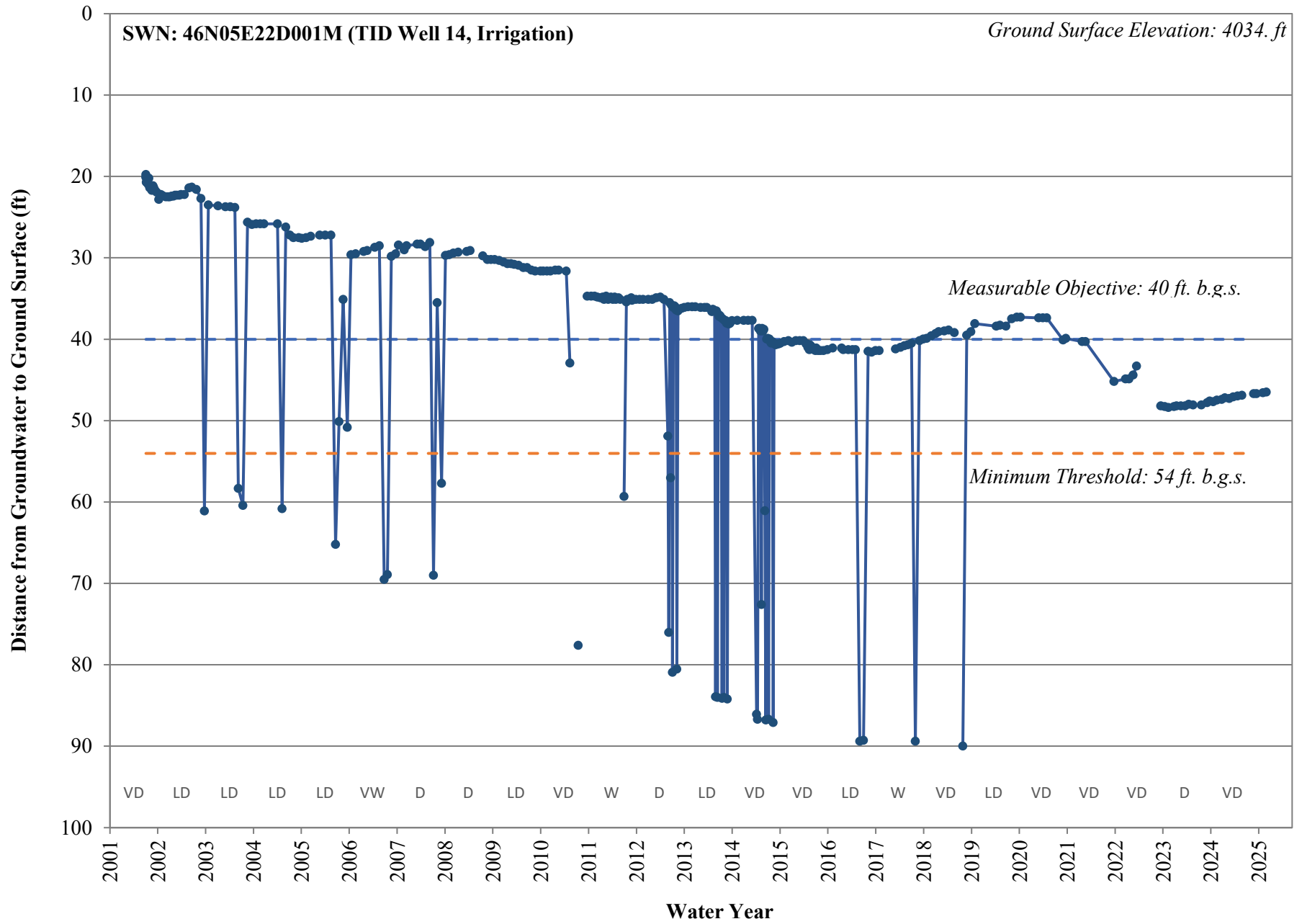


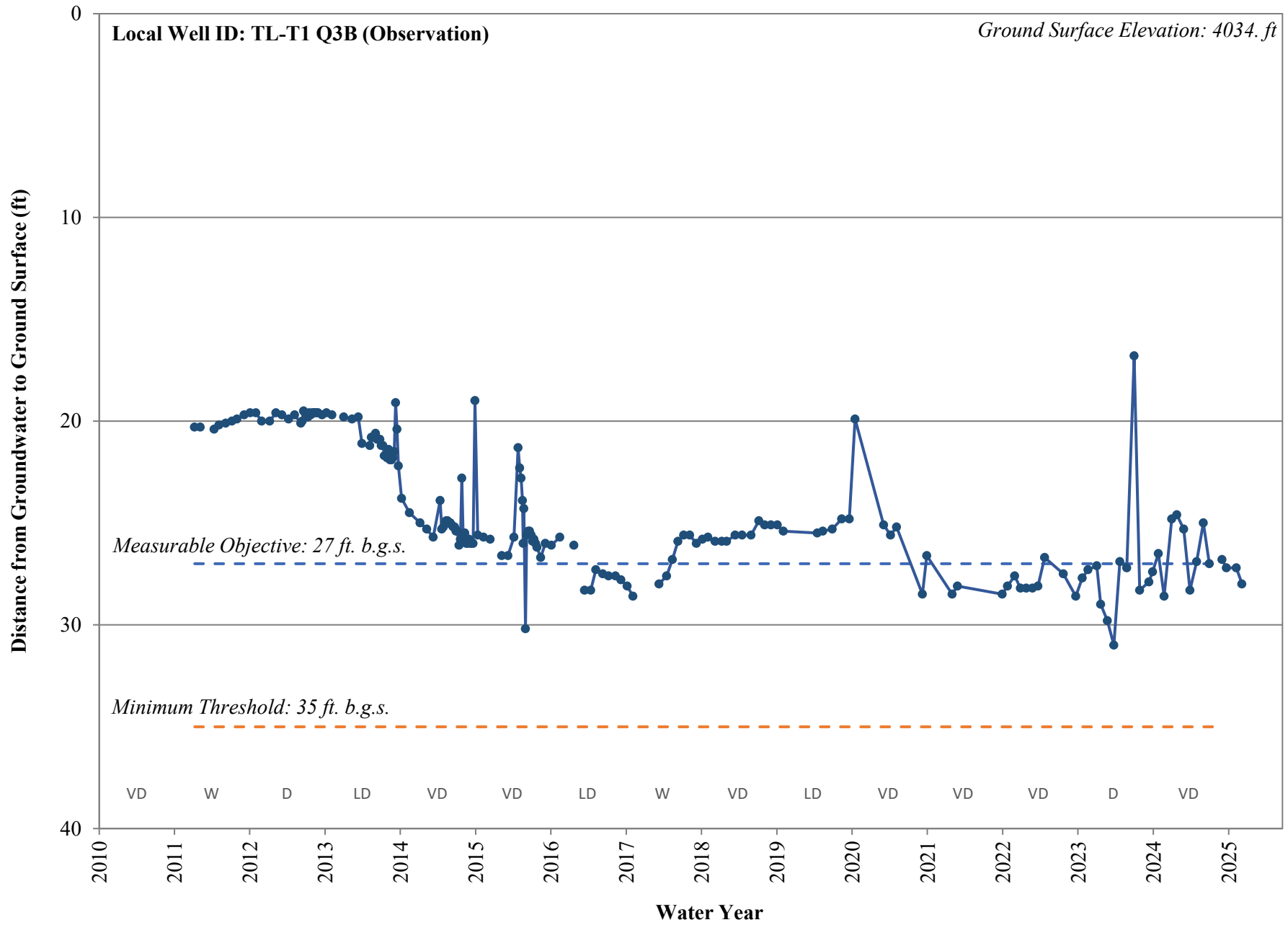




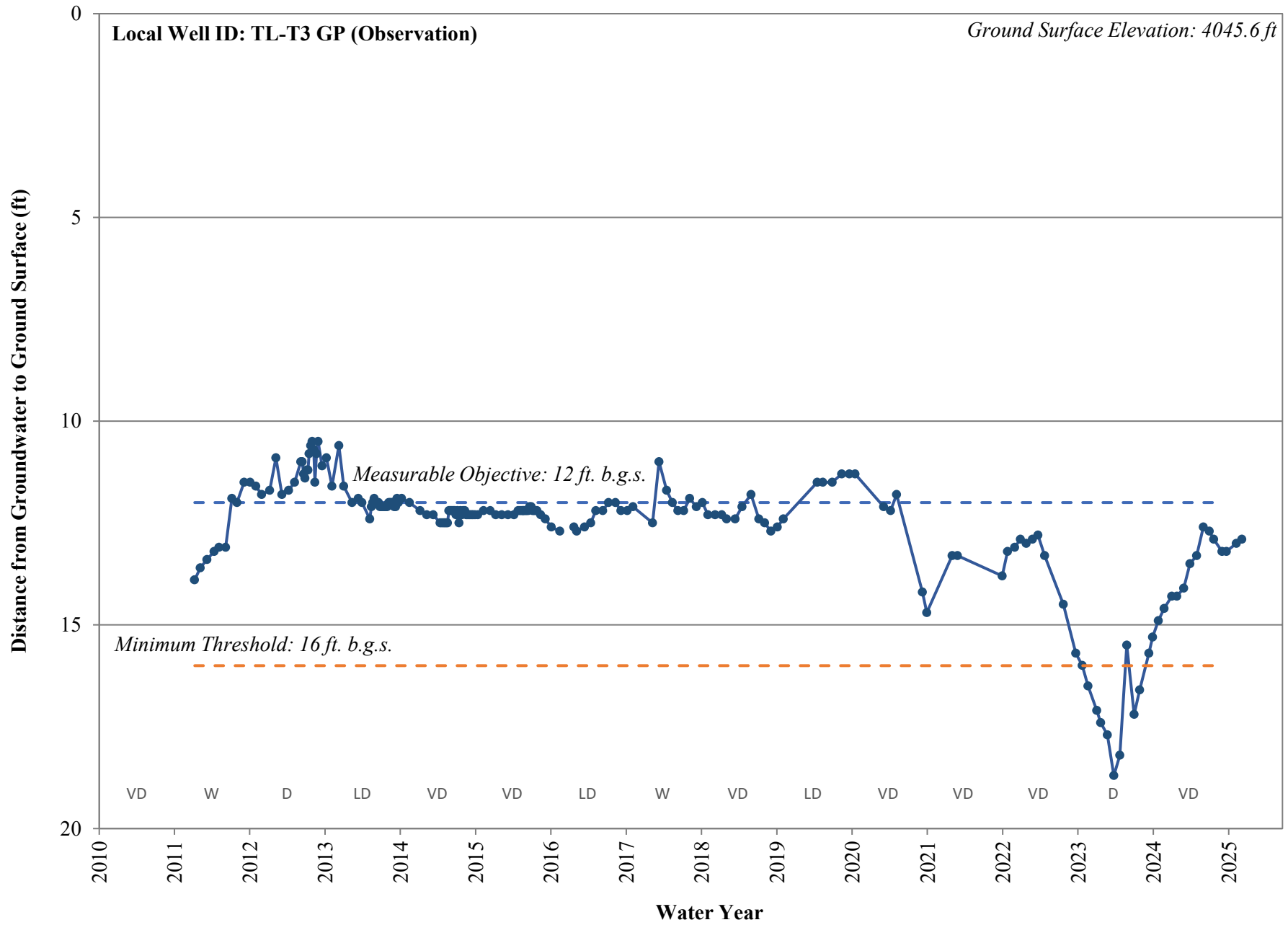












## Appendix C.

# Groundwater Extractions and Methods

## Groundwater Extractions

Basin Number	Water Year	Total Groundwater Extractions (AF)	Water Use Sector Urban (AF)	Water Use Sector Industrial (AF)	Water Use Sector Agricultural (AF)
1-002.01	2024 (Oct. 2023 - Sept. 2024)	7500	400	0	7100

Basin Number	Water Year	Water Use Sector Managed Wetlands (AF)	Water Use Sector Managed Recharge (AF)	Water Use Sector Native Vegetation (AF)	Water Use Sector Other (AF)
1-002.01	2024 (Oct. 2023 - Sept. 2024)	0	0	0	0

Basin Number	Water Year	Water Use Sector Other Description
1-002.01	2024 (Oct. 2023 - Sept. 2024)	n/a

## Groundwater Extraction Methods

Basin Number	Water Year	Meters Volume (AF)	Meters Description	Meters Type	Meters Accuracy (%)	Meters Accuracy Description
1-002.01	2024 (Oct. 2023 - Sept. 2024)	1700	Magnetic and Mechanical Flowmeter	Direct	0-5 %	Manufacturer's Documentation

Basin Number	Water Year	Electrical Records Volume (AF)	Electrical Records Description	Electrical Records Type	Electrical Records Accuracy (%)	Electrical Records Accuracy Description
1-002.01	2024 (Oct. 2023 - Sept. 2024)	0	-	-	-	-

Basin Number	Water Year	Land Use Volume (AF)	Land Use Description	Land Use Type	Land Use Accuracy (%)	Land Use Accuracy Description
1-002.01	2024 (Oct. 2023 - Sept. 2024)	0	-	-	-	-

## Groundwater Extraction Methods

Basin Number	Water Year	Groundwater Model Volume (AF)	Groundwater Model Description	Groundwater Model Type	Groundwater Model Accuracy (%)	Groundwater Model Accuracy Description
1-002.01	2024 (Oct. 2023 - Sept. 2024)	0	-	-	-	-

Basin Number	Water Year	Other Method(s) Volume (AF)	Other Method(s) Description	Other Method(s) Type	Other Method(s) Accuracy (%)	Other Method(s) Accuracy Description
1-002.01	2024 (Oct. 2023 - Sept. 2024)	5800	Private groundwater extraction values based on the calculated average annual extractions by private groundwater pumping, as calculated by the GSP Model for water years 2000 through 2018, during similar water year types. The estimated annual extractions for these years are shown in Figure 2-4 of the Annual Report.	Estimate	Other	Accuracy of the model is unknown.

## Appendix D. Surface Water Supply

### Surface Water Supply

Basin Number	Water Year	Methods Used To Determine	Water Source Type Central Valley Project (AF)	Water Source Type State Water Project (AF)	Water Source Type Colorado River Project (AF)
1-002.01	2024 (Oct. 2023 - Sept. 2024)	Combination of gate rating and spillway rating at the J Canal Headworks.	0	0	0

Basin Number	Water Year	Water Source Type Local Supplies (AF)	Water Source Type Local Imported Supplies (AF)	Water Source Type Recycled Water (AF)	Water Source Type Desalination (AF)
1-002.01	2024 (Oct. 2023 - Sept. 2024)	0	0	0	0

Basin Number	Water Year	Water Source Type Other (AF)	Water Source Type Other Description
1-002.01	2024 (Oct. 2023 - Sept. 2024)	162,000	USBR's Klamath Project

## Appendix E. Total Water Use



## Total Water Use

Basin Number	Water Year	Total Water Use (AF)	Methods Used To Determine	Water Source Type Groundwater (AF)	Water Source Type Surface Water (AF)	Water Source Type Recycled Water (AF)
1-002.01	2024 (Oct. 2023 - Sept. 2024)	169,500	Combination of direct measurement and estimates.	7,500	162,000	0

Basin Number	Water Year	Water Source Type Reused Water (AF)	Water Source Type Other (AF)	Water Source Type Other Description	Water Use Sector Urban (AF)	Water Use Sector Industrial (AF)
1-002.01	2024 (Oct. 2023 - Sept. 2024)	0	0		400	0

Basin Number	Water Year	Water Use Sector Agricultural (AF)	Water Use Sector Managed Wetlands (AF)	Water Use Sector Managed Recharge (AF)	Water Use Sector Native Vegetation (AF)	Water Use Sector Other (AF)
1-002.01	2024 (Oct. 2023 - Sept. 2024)	169,100	0	0	0	0